

MARIA ISABEL GALARZA LEIVA

PORTFOLIO

SELECTED WORK

2

0

2

6

THIS IS MY WORK

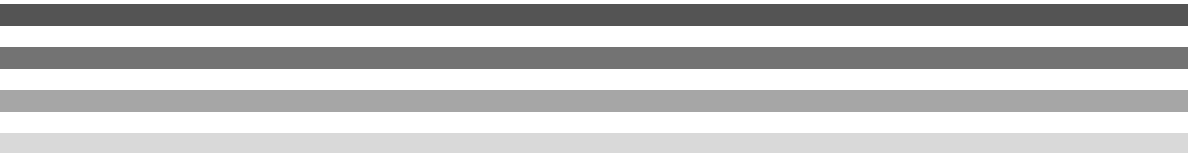
CONTENTS

ARCHITECTURE COURSES

STUDIO PROJECTS AND JOB PROJECTS

SKETCHES, ART AND DRAFTING

PHOTOGRAPHY



ARCHITECTURE PROJECTS

USC ARCHITECTURE PROJECTS, UNIVERSITY OF SOUTHERN CALIFORNIA, 2017

- Abstraction/Pixels to Contours
- Figure Ground
- Unfolded Drawings
- House Model Prototype

DRAFTING, COLEGIO MENOR SAN FRANCISCO DE QUITO, 2018

- Collage with World-Recognized Floor Plans
- Primary School Building at Colegio Menor

AUTOCAD CLASS PROJECT, UNIVERSIDAD SAN FRANCISCO DE QUITO, 2019

- The House
- The 4-story building
- The Reutter House

REVIT CLASS PROJECTS, LA SALLE BARCELONA, 2021

- Experimental Pavilion for the Rambla de Modolell, Viladecans, Barcelona
- Social Housing Tower 75 Units in Plaza Europa

CONSTRUCTION I, LA SALLE BARCELONA, 2021

- Conic and Parábola Models inside La Sagrada Familia
- Dog Shelter with Recycled Materials
- Brick from Scratch
- Moving Blind

CONSTRUCTION II, UNIVERSIDAD SAN FRANCISCO DE QUITO, 2023

- Practice of Constructive Details of Taller V

CONSTRUCTION II, UNIVERSIDAD SAN FRANCISCO DE QUITO, 2026

- Spetris for Llum Barcelona, Winner in Category Risk
- The Most Beautiful Swiss Books Exhibition

STUDIO PROJECTS

UNIVERSIDAD SAN FRANCISCO DE QUITO AND LA SALLE BARCELONA

• STUDIO I

- College of your residential neighborhood
- Location Perspective
- Transformation 2D to 3D
- Create and destroy a cube in 7 steps
- Construction joint
- The Construction Dump

• STUDIO II

- The chair
- Path Source
- "Atrium", home
- Tower Observatory

• STUDIO III

Riverside Heights

• STUDIO IV

- Residence and Urban in San Martí, Barcelona

• STUDIO V

- Architecture Faculty Project in Centro Histórico of Quito

• STUDIO VI

- Architectonic Hybrid Library Project in Iñaquito

• STUDIO VII

- First Stage-Contestant for Premios Pronobis Master Plan, Guayaquil Second Stage- Single Square Development

• STUDIO VIII

- Leisure Center in Jipijapa, Quito

• STUDIO IX- THESIS

- Mixed Use Building: Library and Museum, Valverde, Madrid

MAIN JOB PROJECTS

PATAGONIA

- **PATAGONIA STORE SCALA**
 - Concept of the store
 - Phase 1: Floor Plans, Renders
 - Phase 2: Floor Plans, Renders
 - Finished Project Photography

CVD ARQUITECTURA

- **HOUSE FRESAN/GODOY**
 - Architectural Floor Plans
 - Hydraulic & Sanitary Floor Plans
 - Finished Project Photography
- **HOUSE ATLER/TOBAR**
 - Architectural Floor Plans
 - Hydraulic & Sanitary Floor Plans
 - Finished Project Photography

PATAGONIA

- **PATAGONIA STORE QUICENTRO**
 - Concept of the store
 - Floor Plans
 - Renders
 - Finished Project Photography

SKETCHES, ART AND DRAFTING

SKETCHES

- Batllo House, Rooftop
- Houses with Earthen Berms
- Types of Roofs
- Hyperbolic Paraboloids in Ecuador
- Barcelona Buildings
- Types of Windows
- Squirrel In Motion
- Humans

SKETCHES, ART AND DRAFTING

Art

- Who am I
- Trees Perspective
- 2 Tea Cups
- Building of Quito
- Room with Shadows
- Bell peppers
- Greece
- Azuma House
- Interior Perspective
- Chinatown Street

Drafting

- Who am I
- Trees Perspective
- 2 Tea Cups
- Building of Quito
- Room with Shadows
- Bell peppers
- Greece
- Azuma House
- Interior Perspective
- Chinatown Street

PHOTOGRAPHY

- Walt Disney Concert Hall
- Chanel Guillotine (Breakfast Nook)
- Basilica Di San Pietro
- Palace of Versailles
- Dome of the Reichstag Building
- Evening Dress (Robe du soir)
- House Vicens
- Basilica of the National Vote

Abstraction/Pixels to Contours

In this session, we use Photoshop to manipulate, transform, and abstract images from pixel information into a series of contours, vectors, and lines. We started working with the black and white image compositions from our field trip and generated an image with only lines.

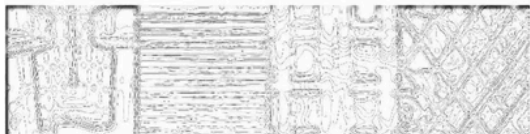
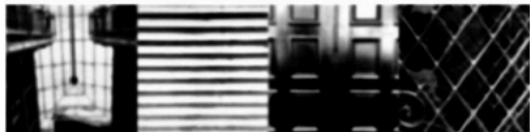
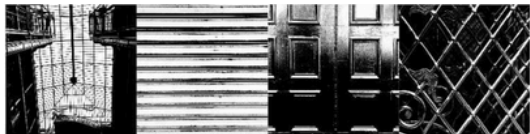
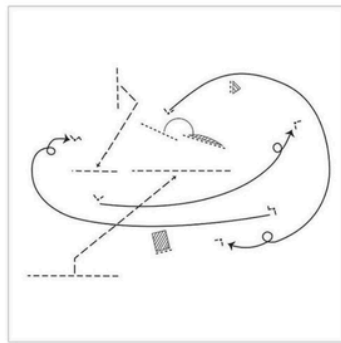
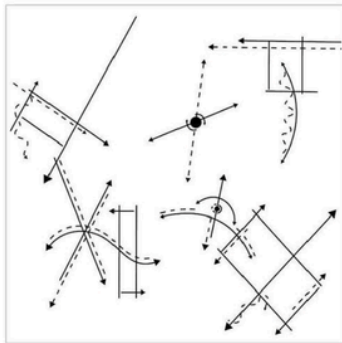


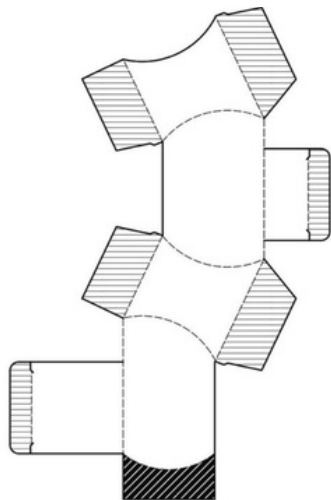
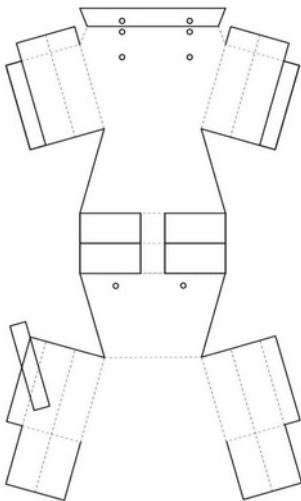
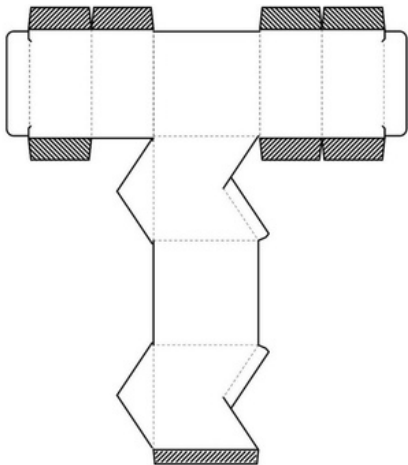
Figure Ground

In this session, I used Photoshop to edit the high contrast and unbiased, align to an 8x8 boundary, transform the image, and adjust levels. Next, I use Illustrator's tools to create a diagram explaining my image's operations. I rotated, moved, merged and traced the image to do this.



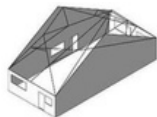
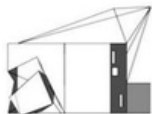
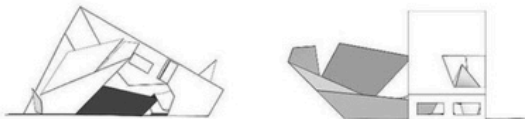
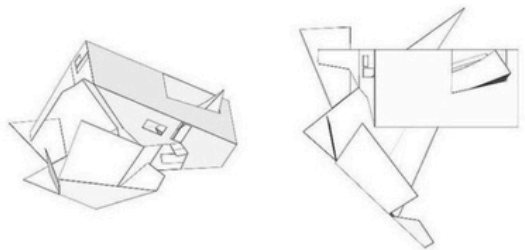
Unfolded Drawings

In this session, Illustrator was used to export the drawings from project 2. What I did was align the drawing using layers, making 3 options for each photo; then I cut, and make connecting lines. Later in each drawing, I used the connect lines, fill solids, and shade commands with these commands I ended up with different results.



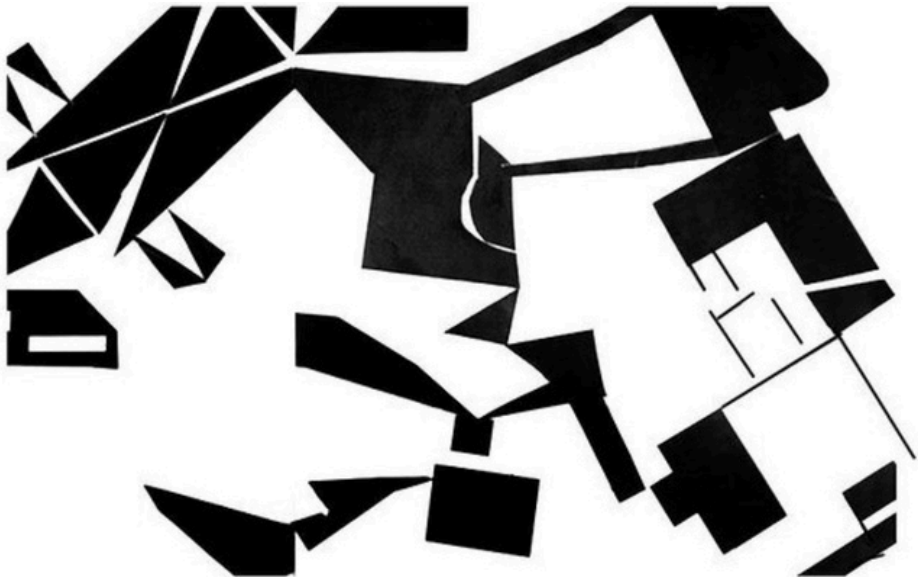
House Model Prototype

In this session, we used the best images from the last project and inserted them into Rhino 3D. We chose if we wanted to have interior walls, floor plan, facade, and roof and we started playing with the program by moving the previous image so that it was realistic. We manipulate each model and render it.



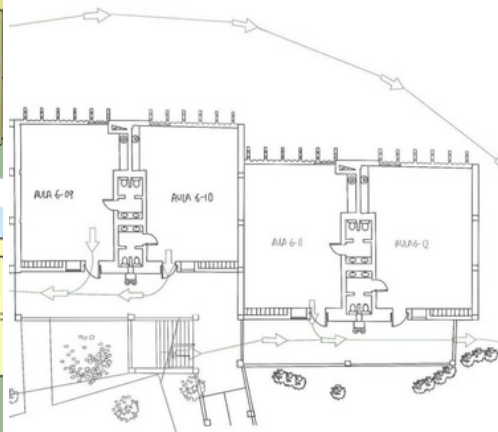
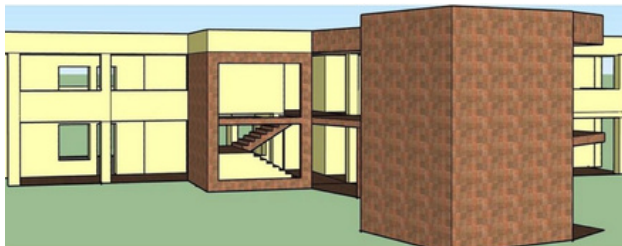
Collage with World-Recognized Floor Plans

In this project, we explore many famous house plans by renowned architects. Each student then chooses up to three house plans to print out. The goal of this task was to explore and with tracing paper create a completely new floor plan with the fragments of the famous house plans.



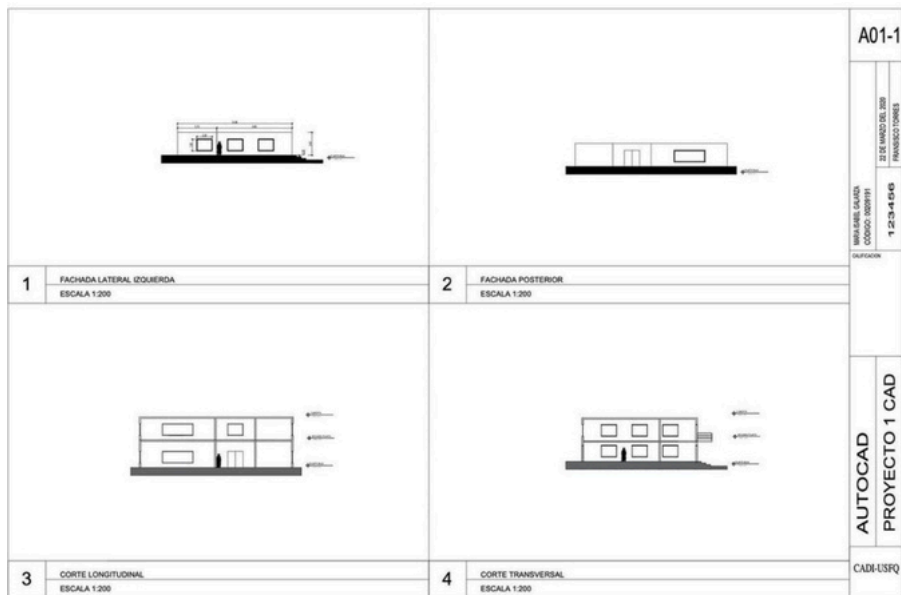
Primary School Building at Colegio Menor

This project consisted of fully measuring the Early Childhood building and the school's bridge with stairs in pairs. The next step was to draw a plan of the building changing the scale. Then we needed to open the Sketchup program and start drawing the floor plans drawn earlier. When we made the floor plans, we used various tools to create the building in three dimensions. Finally, we assign materials to the architectural elements of the building.



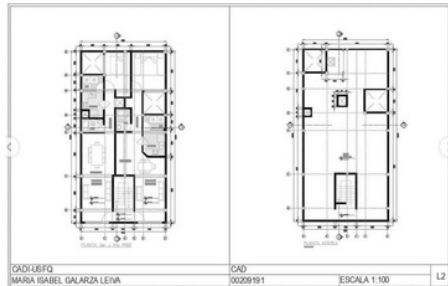
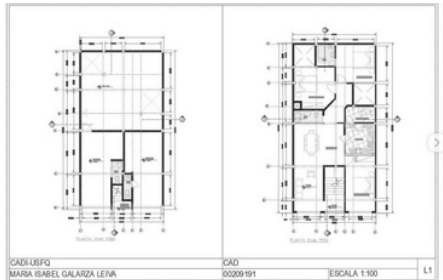
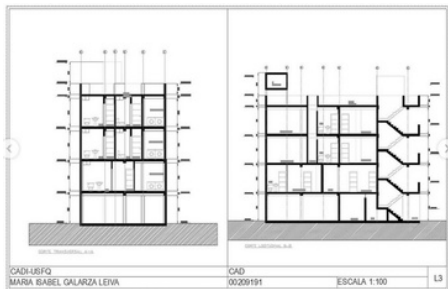
The House

This first Autocad project consisted of drawing a house in which the teacher told us what views we wanted, how many windows, and finally the size. Later, cuts and facades were created.



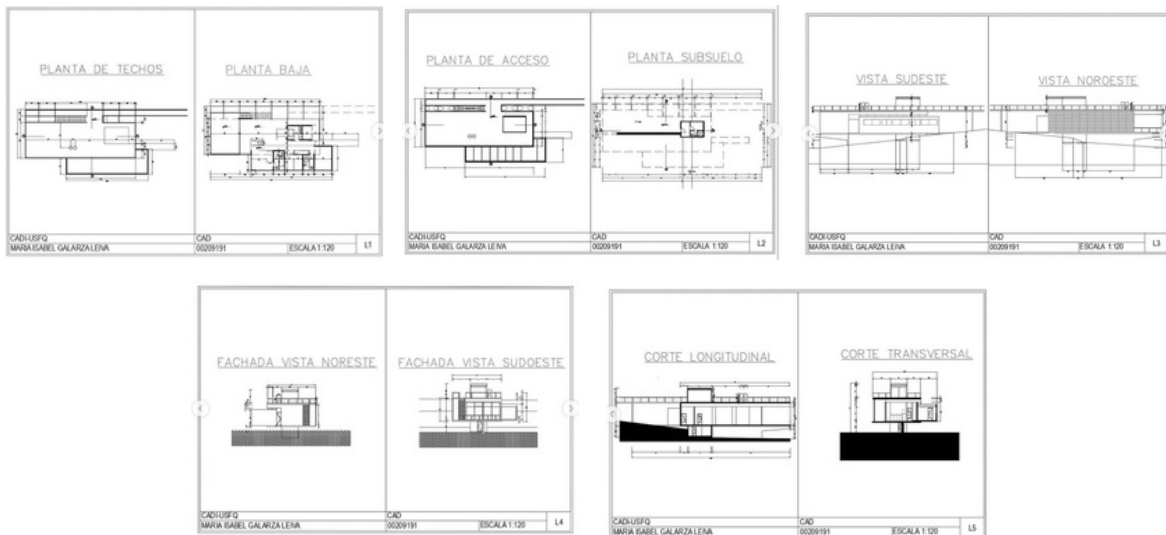
The 4-story building

This project consisted of designing a building and its four floors, 2 sections and within the floors using Autocad blocks. Finally, use different line types and thicknesses.



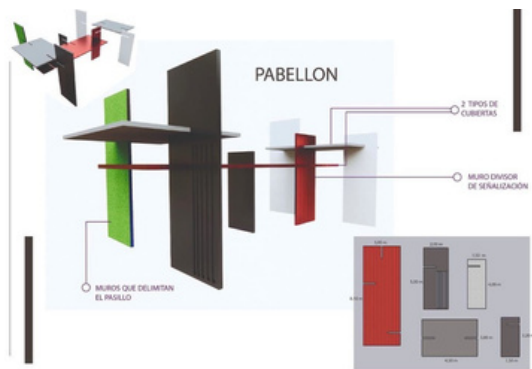
The Reutter House

This project consisted of redoing the plans of Mathias Klotz's Reutter house with their respective measurements, adding dimensions, line types, and making cuts.



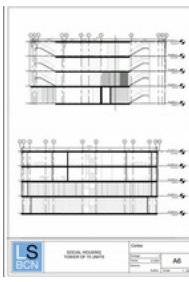
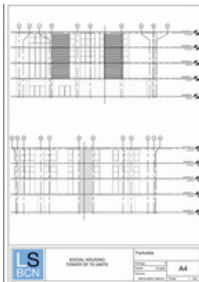
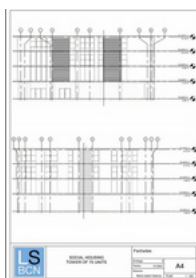
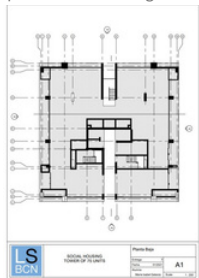
Experimental Pavilion for the Rambla de Modolell, Viladecans, Barcelona

The proposal, based on the provided AutoCad from the Eines teachers, strategically places the project on an available space along the Rambla, identified as a frequently crossed area near a basketball court on Google Maps. Using modular construction strategies, the design integrates interconnected modules with gears, forming a cohesive and versatile element. The modules are conceptualized for sunlight reflection and diverse spatial functionalities.



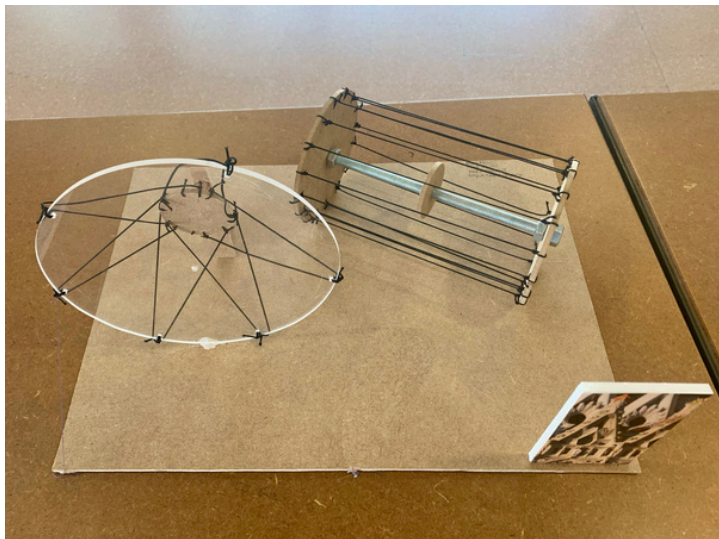
Social Housing Tower 75 Units in Plaza Europa

This final book delivery involved creating a cover and letterheads on each PDF page. Using Revit's title block function, I easily generated sheets with requested information. This step, akin to AutoCAD, allowed efficient content customization. The project's structured progression, combining theory and practical exercises, enhanced my learning and problem-solving skills.



Conic and Parábola Models inside La Sagrada Familia

In groups of four we were given a specific part of the basilica. We needed to create these two 3D objects from wood, string, and screws that represent the conic figures with wood. For the parabola conic section we needed the object to move so we inserted elastic so it can move from a cylinder to a parabola.



Dog Shelter with Recycled Materials

In this project, we had to make a full-scale shelter for a dog and use recycled material to build it. The material had to be obtained on the streets or at the Barcelona Adjuntament. The house had thermal insulation, a window, and a storage compartment, and was water-repellent.



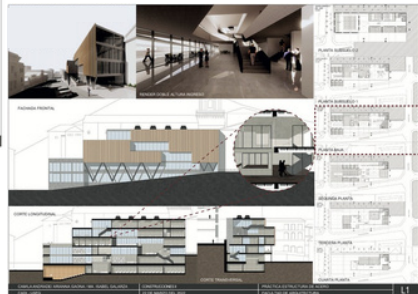
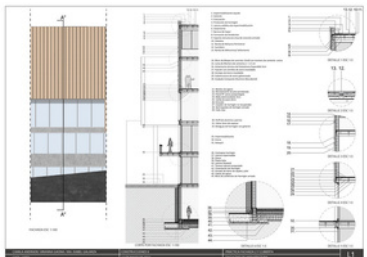
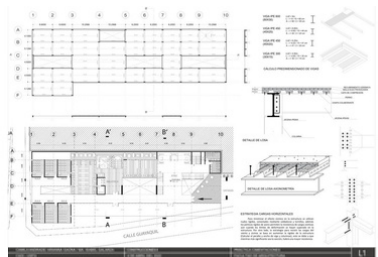
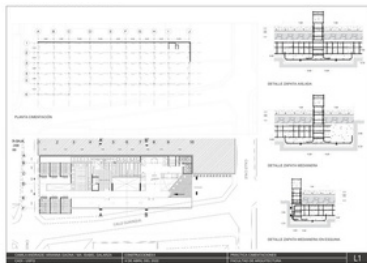
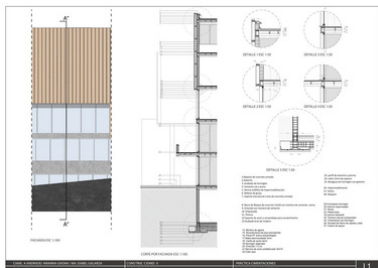
Moving Blind

In our collaborative construction project, we envisioned and executed a unique blind system that seamlessly blends functionality and aesthetics. Crafted by a team of five, our innovative design employs a real-scale implementation, utilizing a combination of robust volts and warm-toned wood. The blinds are ingeniously constructed to open and close efficiently through a meticulously engineered system. The incorporation of wooden elements not only adds a touch of natural warmth to the structure but also ensures durability and sustainability. This project not only showcases the practicality of our blind system but also underscores the importance of thoughtful material selection and teamwork in achieving a harmonious balance between form and function in architectural endeavors.



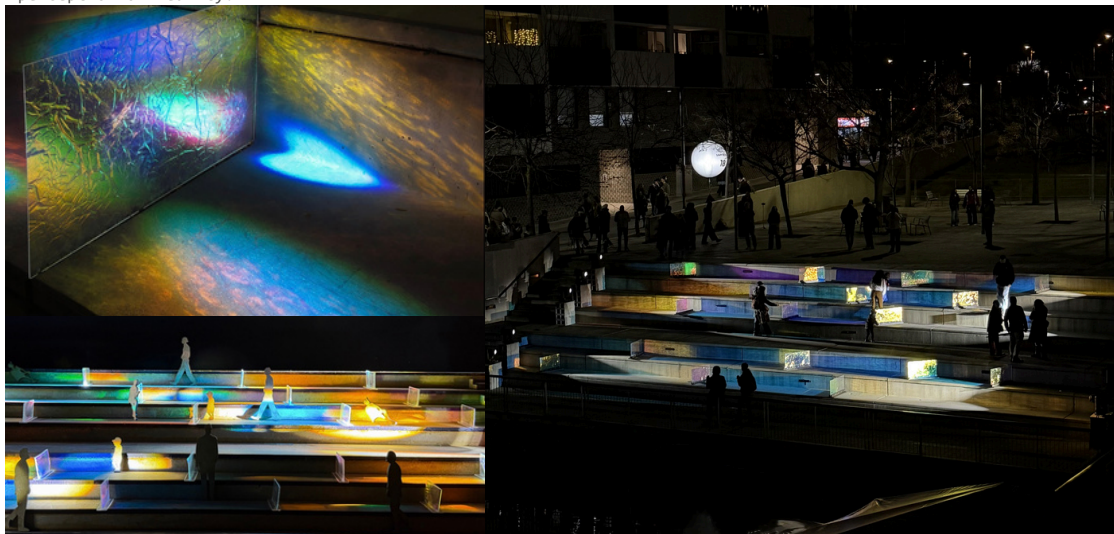
Practice of Constructive Details of Taller V

These practices were based on my project for an architecture school in Quito. These four practices were carried out in trios. All drawings were made in AutoCAD: steel, foundation, facade, roof and concrete.



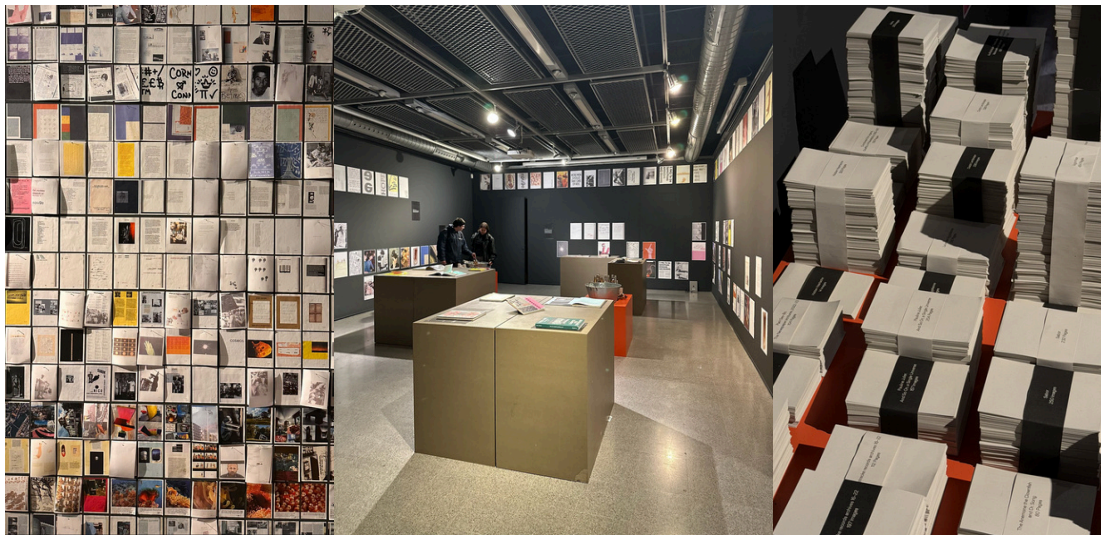
Spetris for Llum Barcelona

In the Jardins d'Elisava, suspended dichroic glass panels and white lights create a shifting kaleidoscope of colour. The installation reflects on truth in a hyperconnected world, with lights reacting in real time to global news—illuminating one side for “true” or “fact-checking” and the other for “false” or “misinformation.” These changes highlight the tension between opposing narratives and how they shape our perception of reality.



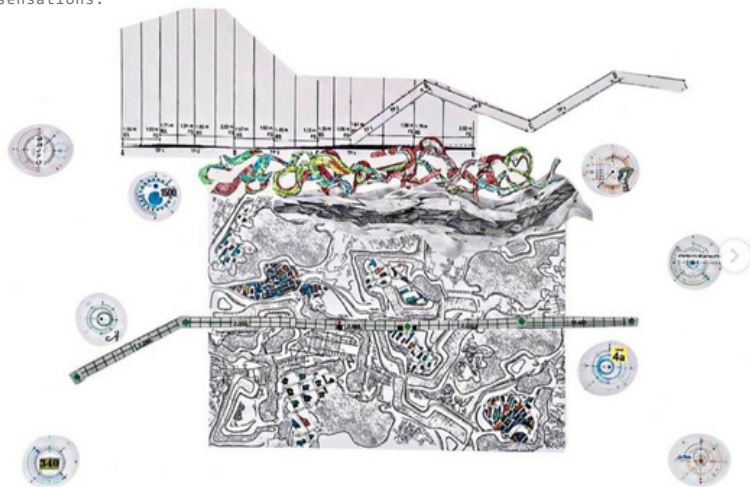
The Most Beautiful Swiss Books Exhibition

The exhibition The Most Beautiful Swiss Books 2025 presents 20 award-winning titles through a carefully designed spatial concept, combining display systems, graphic elements, videos, and immersive installations. It offers a hands-on exploration of editorial culture and narrative, inviting visitors to engage with the books through multiple sensory and interpretive experiences.



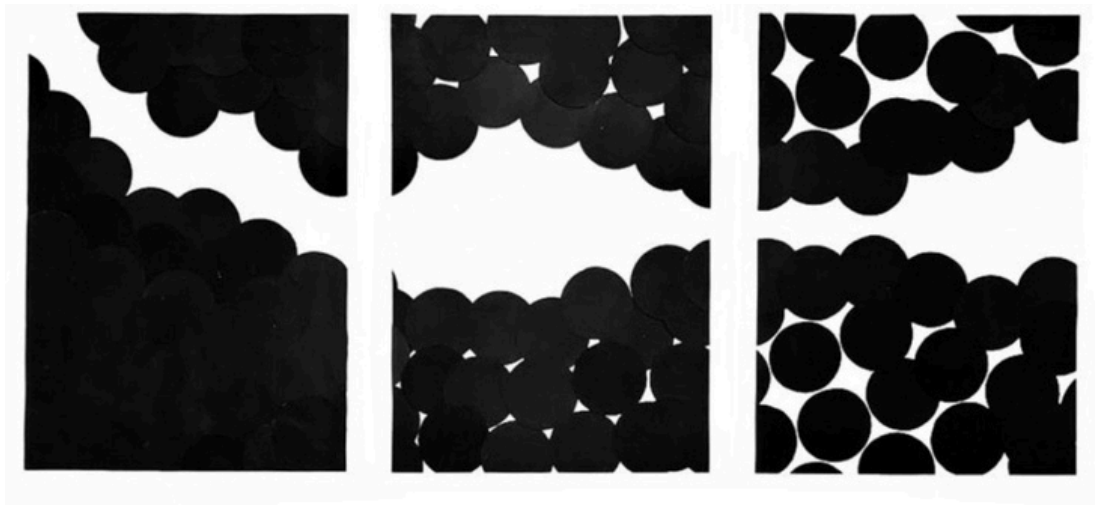
College of your Residential Neighborhood

This exercise aimed to enhance environmental awareness by exploring the organization and structure of our surroundings, as well as our own order. Using our five senses, we examined the elements shaping our environment and reflected on our neighborhood. Drawing inspiration from George Braque, we created collages featuring colors, materials, images, texts, and objects. The final product was intended to convey a sense of place, capturing each student's unique observations and sensations.



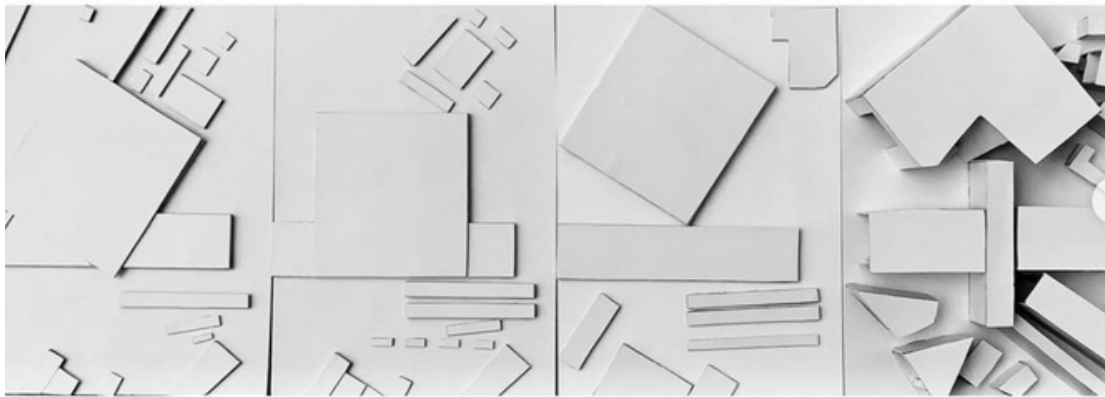
Location Perspective

The objective of this exercise was to study the relationships of form and space, object and field. This project required paying attention to the relationship between the objects we perceive. We needed to create a series of three interrelated compositions using black circles. The black circles on the field needed to create the void and the full. There was no minimum number of circles.



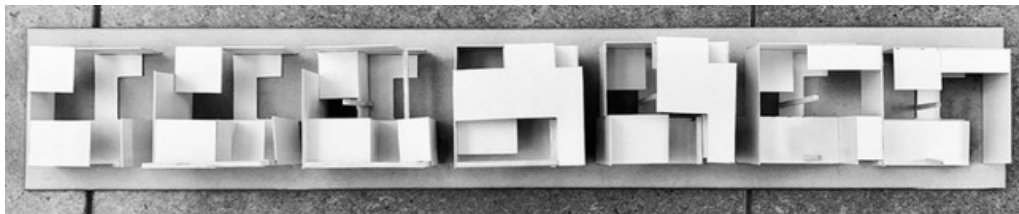
Transformation 2D to 3D

The goal of this exercise was to choose two paintings that came from Russian Constructivism. When we chose these frames, we needed to create a progression from 2D to 3D. We needed to create a progression that would show high relief using only white, black or a combination of both. The exercise also said to consider an ant's point of view. The progression ended with a 3D model in this step the space moves over and around the figures.



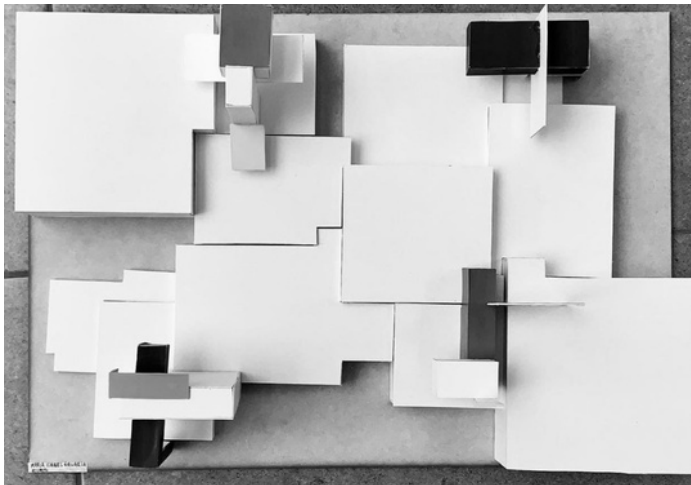
Create and destroy a cube in 7 steps

The objective of this exercise was to build a model that showed the seven-step construction and creation of a cube. It had to be a progression of a sequence from left to right, the fourth model needed to show the cube completely. Repetition was the key to showing the sequence and before making the models we needed to investigate Peter Eisenman's V House and Carlos Scarpa's Possagno Gallery.



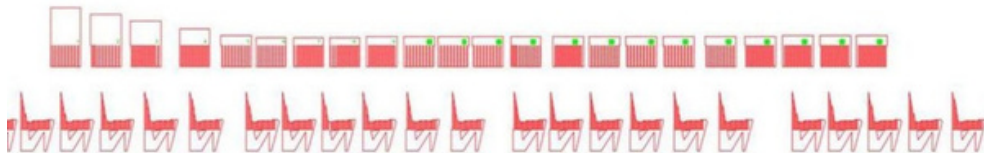
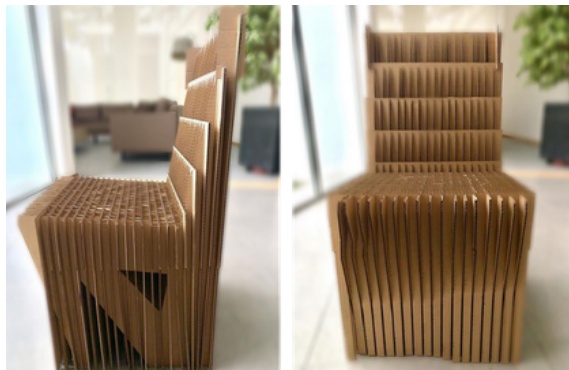
Construction Joint

The goal of this exercise was to show how materials work and are organized in the world. We needed to analyze strategies for combining surfaces and volumes in construction focusing on joints. We needed to create an articulated lot in which there will be 4 smaller models that are articulated to the lot and have a kind of joint. Later in the project, we introduced color to combine the previous exercises and represent the analytical dimension of the concept. Lastly, the construction had to be meticulous and careful to show everything in one piece.



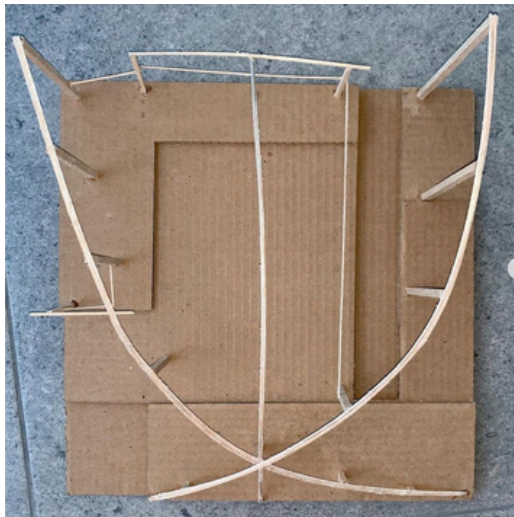
The chair

The task involved creating a full-size sitting apparatus with the primary surface positioned at least 30 cm above the floor. Considerations included the influence of prior studies on human presence, scale, and proportion on the chair's design, the chair's structural implications, and the impact of materials on shape and structure. Additionally, factors such as the chair's personality, its analog counterpart, and its reflection of evolving attitudes toward architecture and design were explored. The construction was limited to cardboard-to-cardboard joints without the use of screws, rubber, glue, or rope. Approved materials included cardboard and backing products, and any cutting or shaping tool could be employed.



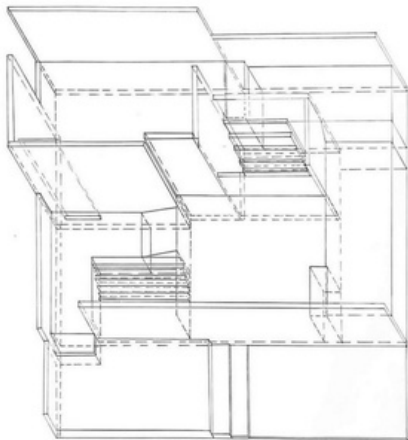
Path Source

This exercise aimed to design a 19.5 x 19.5 m lot in a flat, arid, and windy environment using wood, steel, stone, and water as materials. The task involved creating a path with linear elements, starting from the east entry point to a pool on the west side, adjacent to the entrance of exercise 14. The design focused on developing a poetic sensitivity in architectural expression, considering the balance between intuition and artistic sensibility. Elements were limited to emphasize basic compositional aspects, and relationships between them were crucial from the outset. The composition explored geometric progressions, incorporating opposing themes such as symmetry-asymmetry, front-rear, and various others. The design also considered density, hardness, elasticity, and tenacity in models, emphasizing the significance of space and light as defining elements in architecture.



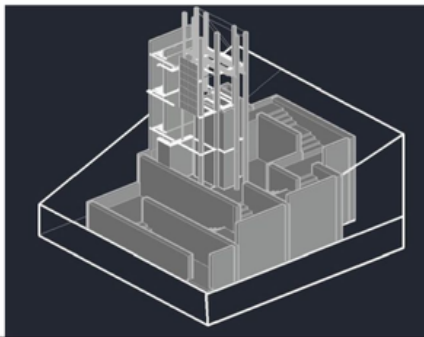
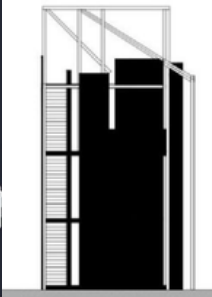
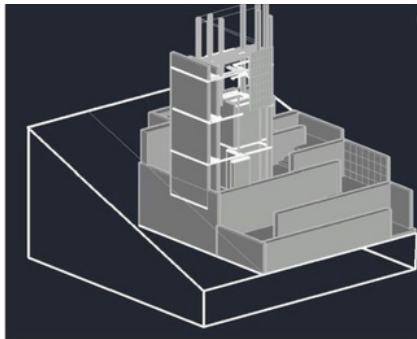
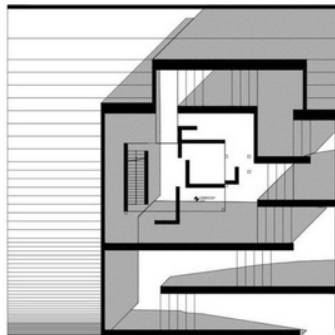
"Atrium", Home

Los aspectos del ejercicio #3 y explorando el desierto como un lugar para reflexionar y actuar. La intervención en el desierto implica romper un equilibrio frágil entre el cielo y la tierra, requiriendo un pensamiento cuidadoso. El diseño buscaba crear una narrativa arquitectónica que abordara la reducción-liberación y la experimentación-síntesis, permitiendo la expresión del deseo en la forma arquitectónica y reconociendo la necesidad de constante reconsideración y adaptación a cambios dinámicos.



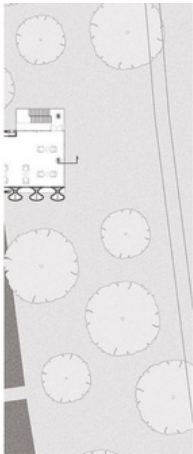
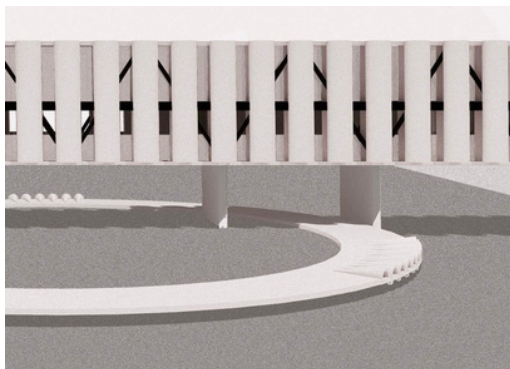
Tower Observatory

The objective was to create a 19.5 x 19.5 m space with a 20R slope from +2.70m (edge with exercise #4). The tower design, 9.60 m high, serves as basic housing for cooking, sleeping, social exchange, and an exercise area on the deck, using a heavy construction system. Additionally, an artifact interacting with the tower, constructed with a lightweight system, was to be designed freely. It could serve various purposes, such as an observatory, a wind observation mechanism, or an object for capturing shadows or observing the sun. The proposal aimed to derive content through the evolution of language related to concept/experience, mind/body, space/use, and construction/materiality.



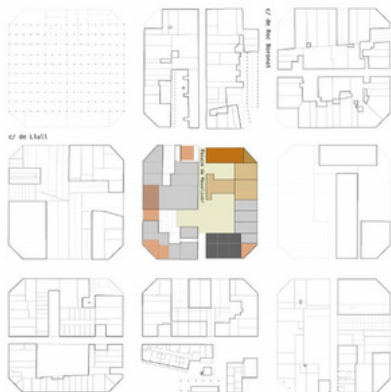
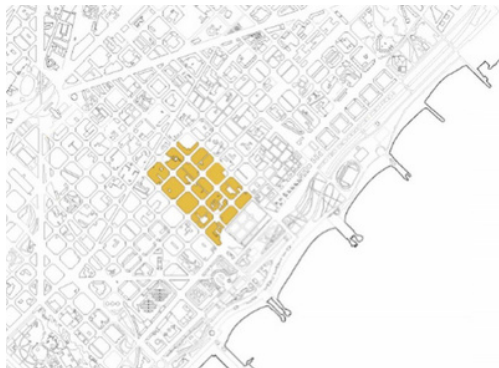
Riverside Heights

This innovative Barcelona architecture project features a suspended two-story apartment building over the Besòs River. The design seamlessly integrates functionality with the scenic riverside location through meticulous planning and innovative engineering. Residents enjoy panoramic river views, privacy, and abundant natural light. Integrated communal spaces, like suspended terraces, enhance the overall quality of life, embodying a spirit of innovation for an extraordinary living experience by the serene river.



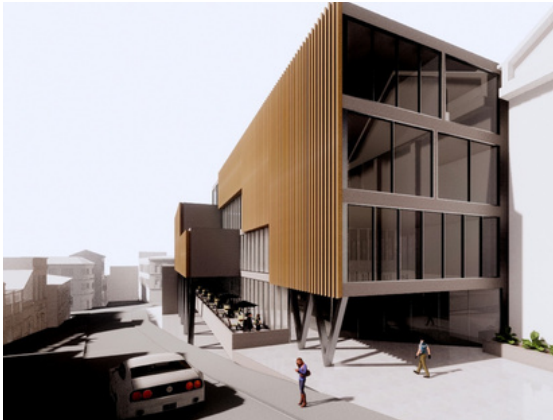
Residence and Urban in San Martí, Barcelona

The project is located in the Sant Martí neighborhood of Barcelona, the focus was on studying the urban fabric through the analysis of 6 squares. The examination delved into the functioning of blocks within the neighborhood context. The comprehensive exploration allowed for a deep understanding of the interplay between public spaces and surrounding structures by understanding the urban environment. Following this analysis, the project culminated in the selection of a specific square for transformation into a residential space. The chosen square became the canvas for architectural modification, aiming to create a bespoke residence that harmonizes with its surroundings while addressing the unique needs of the community.



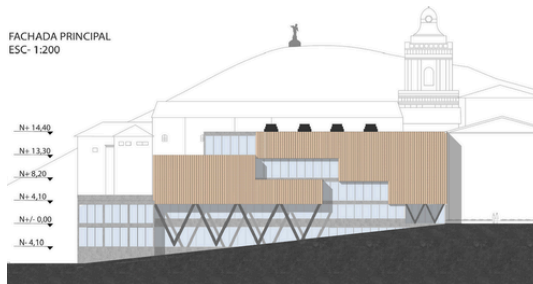
Architecture Faculty Project in Centro Histórico of Quito

Proyecto de la Facultad de Arquitectura en el Centro Histórico de Quito con el concepto "Atmósferas". Se crean patios concurridos diseñados para influir en las emociones de los estudiantes y mejorar su experiencia académica. Cada patio tiene una atmósfera única, inspirada en Zumthor, definiendo el orden programático y conectando espacios jerárquicos. El enfoque es equilibrar emocionalmente a los estudiantes, considerando su bienestar al recibir información. La propuesta se basa en un análisis preciso del lugar y una estrategia espacial y organizativa claramente representada.

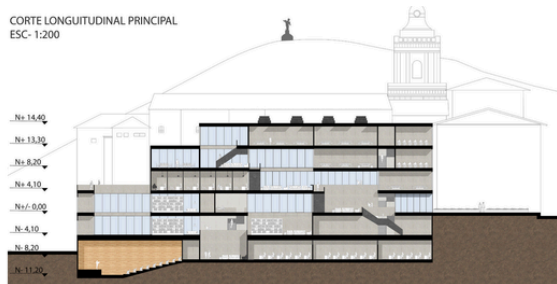




FACHADA PRINCIPAL
ESC- 1:200



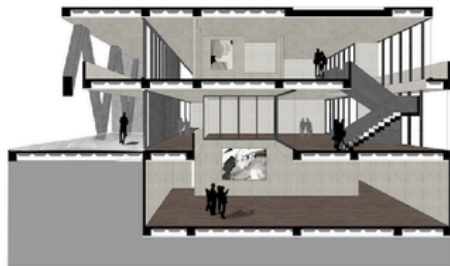
CORTE LONGITUDINAL PRINCIPAL
ESC- 1:200



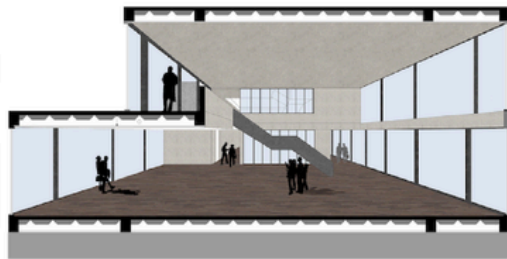
CORTE FUGADO 3 (BIBLIOTECA)
ESC- 1:50



CORTE FUGADO 1 (FOYER Y BIBLIOTECA)
ESC- 1:75

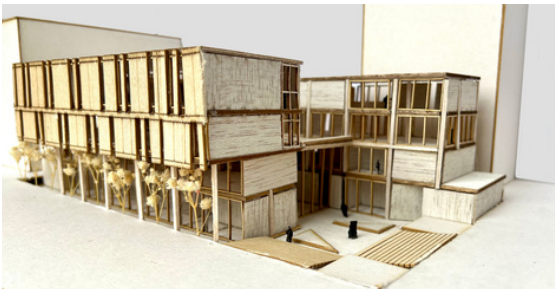


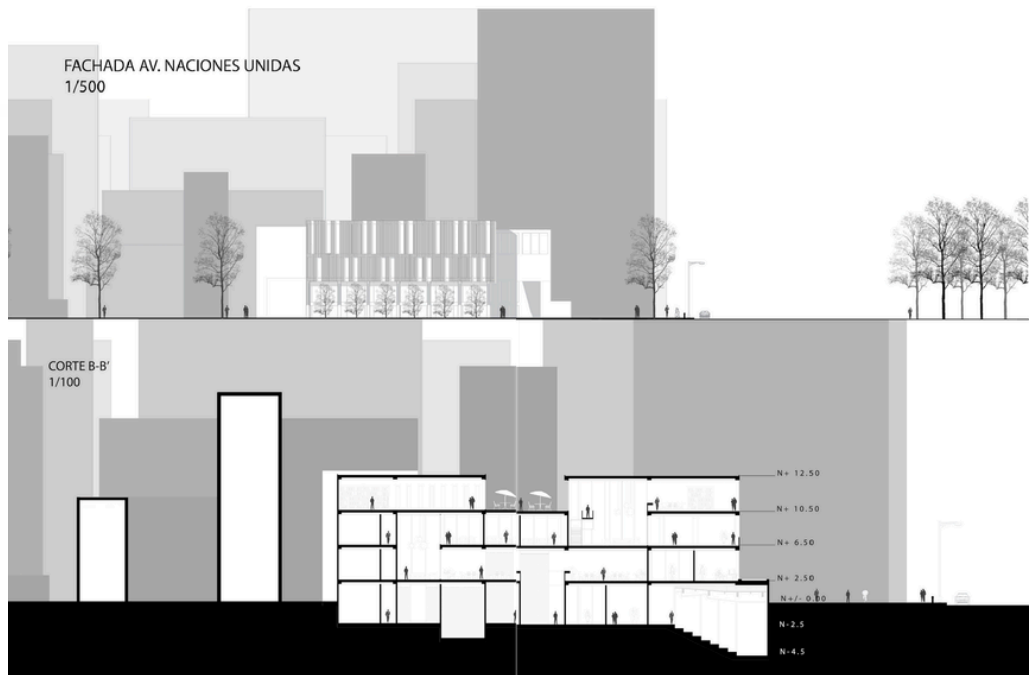
CORTE FUGADO 2 (ATRIO)
ESC- 1:75

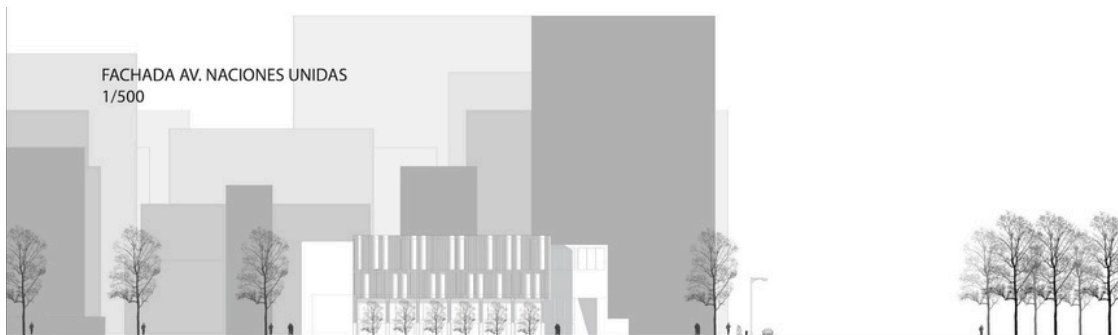


Architectonic Hybrid Library Project in Iñaquito

Addressing Quito's shortage of quality public libraries, a hybrid project in Iñaquito, Ecuador proposes combining a library with an aquarium. Leveraging the opportunities presented by the new metro system, the design focuses on architecturally innovative buildings that blend diverse uses. Specifically, the Iñaquito station area would house an aquarium, filling a void in local attractions. The design features a sunken plaza on a corner lot, creating a dynamic entrance. The aquarium centers around a main pond with irregular circulation, offering a unique exploration experience. Shared spaces, like an auditorium. The key concept involves using water as a unifying architectural element, with underground aquariums contributing to the library's ambiance. A central water mirror enhances the overall user experience, uniting the library and aquarium components.





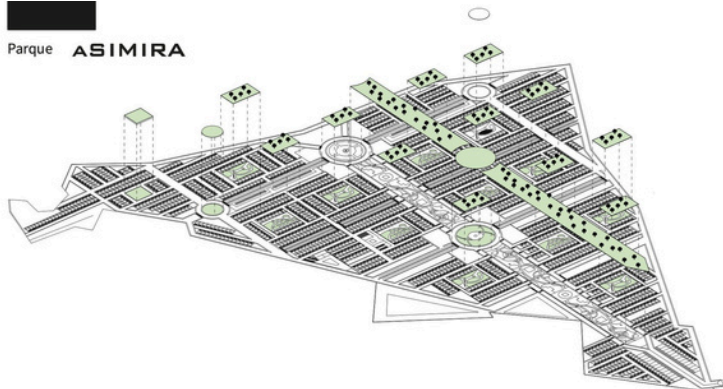


First Stage-Contestant for Premios Pronobis Master Plan, Guayaquil

The project unfolds in two stages, with the first phase conducted in groups as part of a competition for Pronobis in Guayaquil. The course considers architecture competitions as opportunities for practical learning, simulating and simplifying professional practice. The chosen competition, "Smart City," involves the urban-architectural development of a territory in Guayaquil by a private real estate company. The focus is on academic exercise rather than actual participation. In the initial group phase, each team analyzes the specified territory, emphasizing topography, climate, vegetation, road networks, public transportation, service networks, and relevant city-data.



Parque **ASIMIRA**



VISTA 5



VISTA 6

FACHADA
FRONTAL



CORTE A-A



PLANTA BAJA

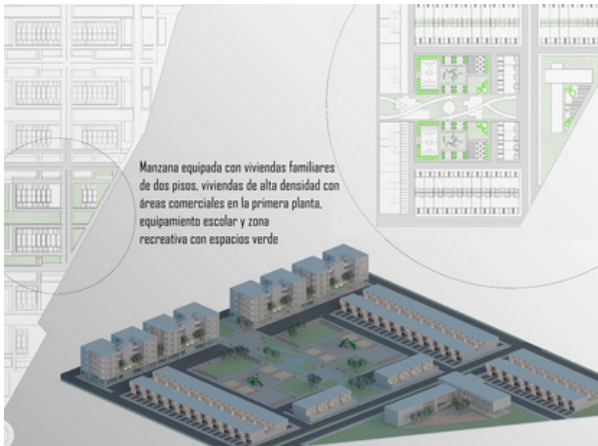


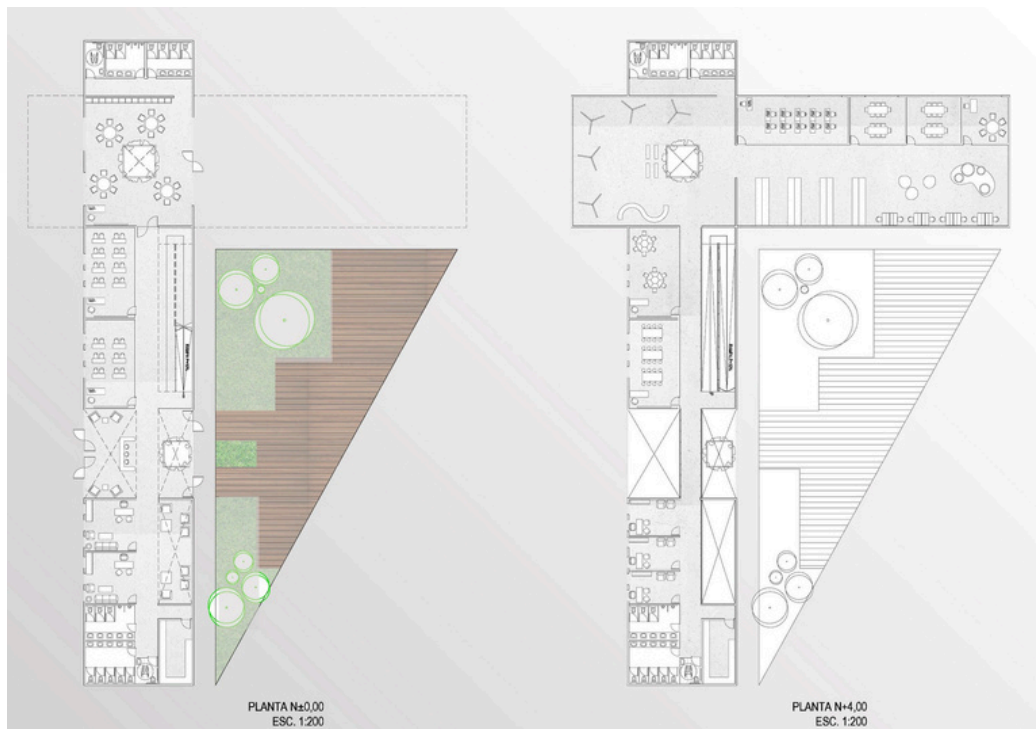
PRIMERA PLANTA IMPLANTACIÓN

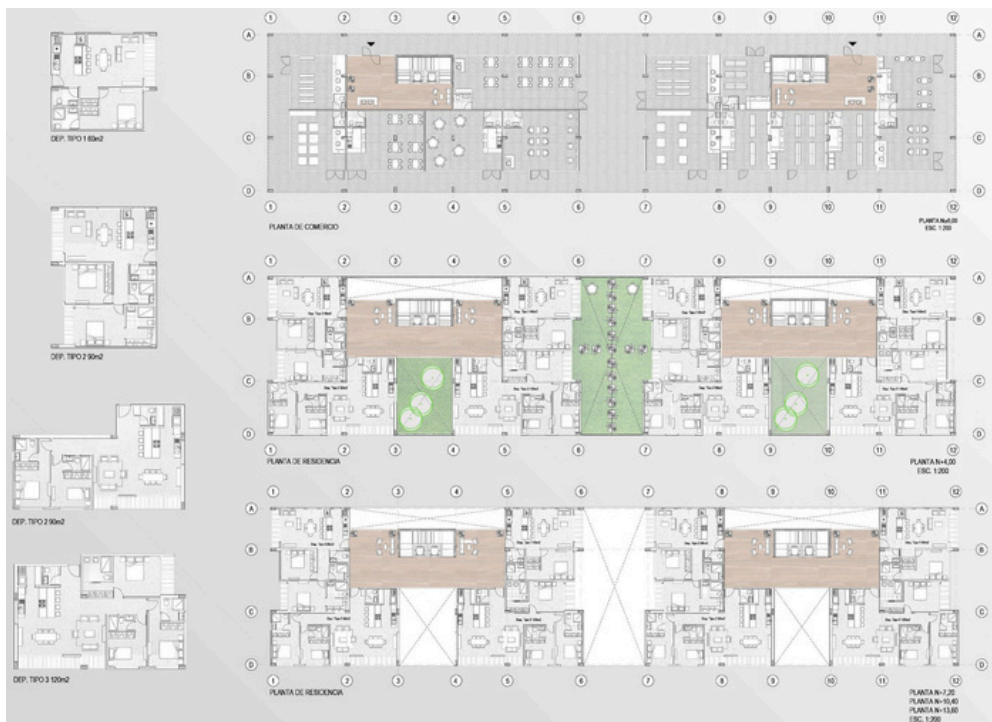


Second Stage-Single Square Development

The second stage involves individual work, with each student selecting and analyzing a block from the master plan developed in the first phase. The master plan includes both public and private zones, encompassing recreational, commercial, office, and cultural areas and housing clusters. In this phase, I chose a block and implemented urban green spaces, semi-detached single-family, and multifamily buildings. Additionally, I introduced a daycare facility to enhance the community's amenities. The overall project demonstrates a comprehensive understanding of urban planning, architectural design, and the integration of diverse functions within a Smart City framework.



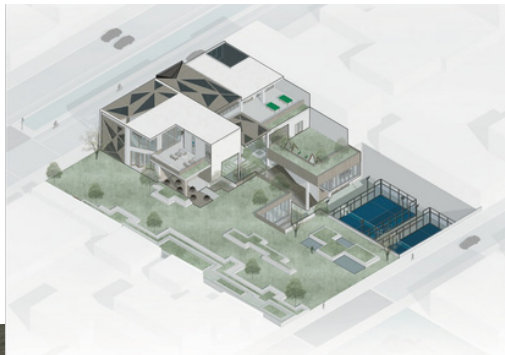


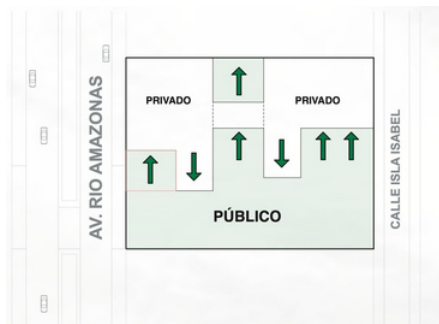
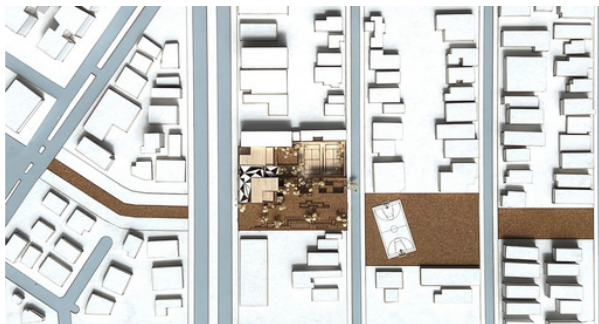




Leisure Center in Jipijapa, Quito

The leisure center project near the Jipijapa metro station integrates terracing and Isla Tortuga Park, offering spaces for minor sports, a community hub, and a sports facility made in duos. Informed by local perspectives and urban planning principles, the design addresses the impact of gentrification and noise concerns by incorporating green cleft and terraced volumes. Surveys and engagement with Jipijapa residents guided the project, responding to the community's desire for nature and sports spaces. The center respects local context and heights and serves as a visually connected, community-oriented space, providing a solution for the lack of green areas in Jipijapa's urban planning.

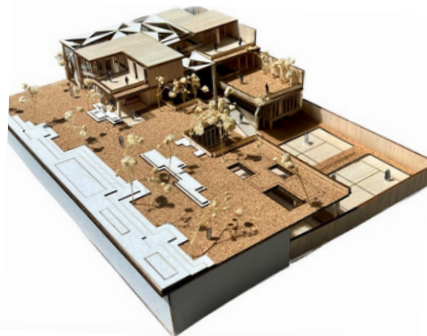




Grieta Verde Articuladora de Espacios



Implantación





Planta 0,0



Planta -4.50



Planta +4.90



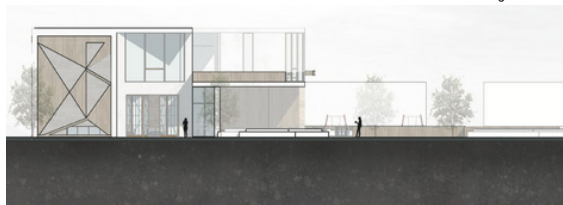
Planta -8.90



Corte Longitudinal



Corte Longitudinal



Fachada Parque Isla Tortuga

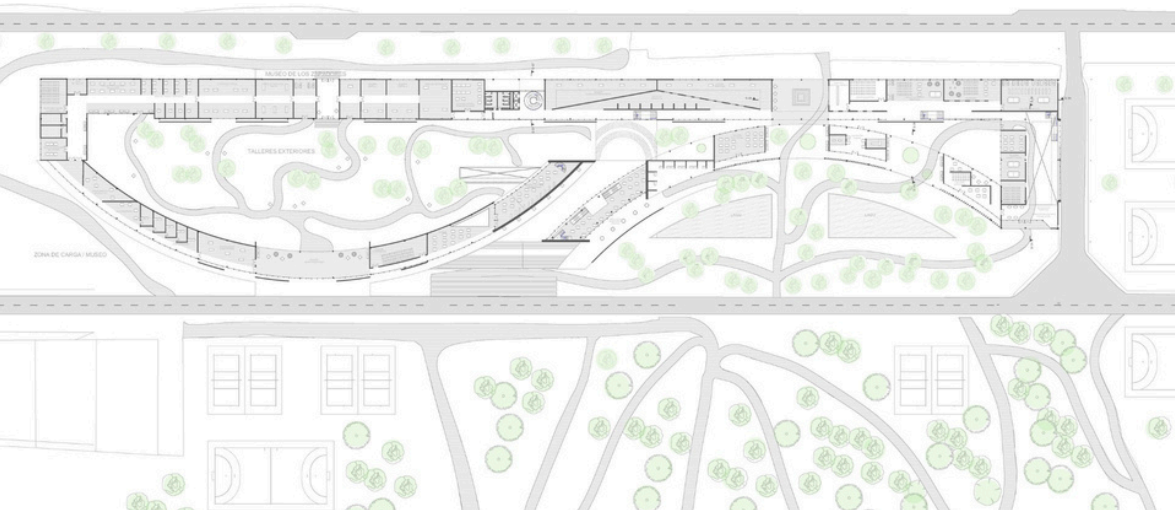


Corte Transversal

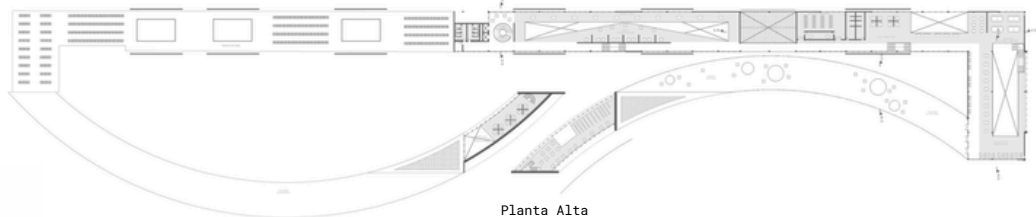
Mixed Used Building: Library and Museum, Valverde, Madrid

This architectural proposal transforms the current Museo de los Zapadores in Valverde, Madrid, into a sustainable and modern library museum. The design emphasizes ecological principles, incorporating sustainable materials and environmentally friendly construction techniques. The focus is on user well-being, ensuring natural light, ventilation, and flexible spaces for interaction. The project aims to create a cultural and social hub, integrating green elements and relaxation areas to enhance the connection with nature, fostering sensory and visual experiences in the library museum.

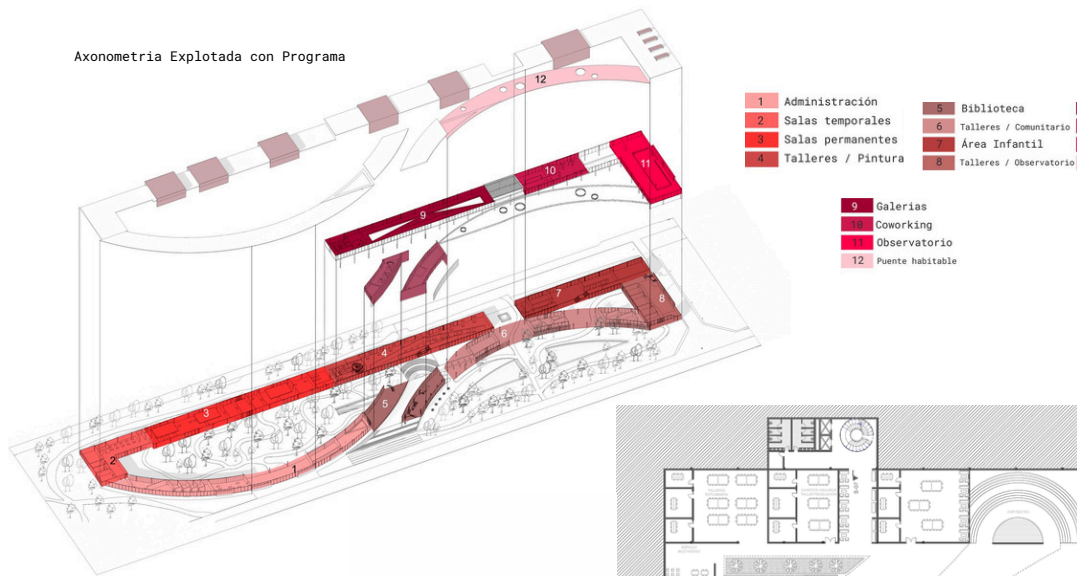




Planta Baja



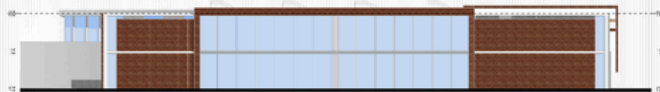
Axonometría Explotada con Programa



Subsuelo



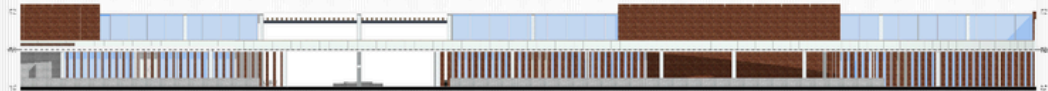
Fachada Norte-Sur Calle Antonio de Cabezón



Fachada Este-Oeste



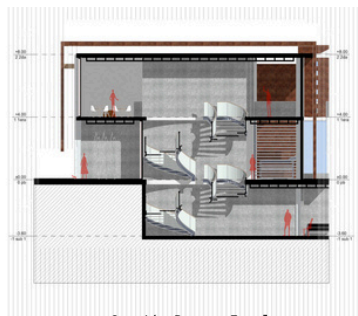
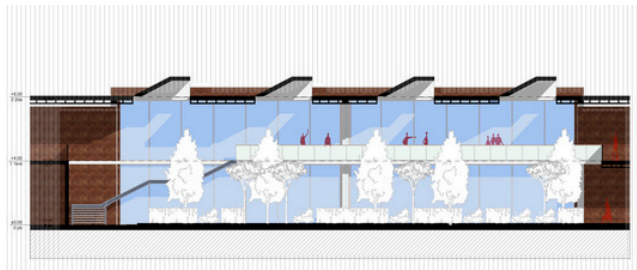
Fachada Oeste-Este



Fachada Sur-Norte



Sección Ampliación Museo



Patagonia Store Scala, Phased Buildout and Concept

This is the first Patagonia Store in Ecuador. It is located in Cumbayá's Scala Mall and embodies sustainability with a reclaimed wood and brick façade, a steel-clad mission wall, and a Worn Wear repair station. Built-in two phases for a gradual rollout, Phase 1 focused on establishing the core retail space with brand messaging, reclaimed materials, and key functional areas. Phase 2 expanded the mezzanine, integrating additional product displays, seating, and an environmental storytelling section to enhance customer experience. With its "Buy Less, Demand More" message, it maximizes space while reinforcing Patagonia's commitment to responsible retail.



Level 1



Level 1

Phase 1- Level 1

- Large Mission Statement paired with a seating area
 - Web Sales at extended cash wrap
 - Worn Wear Repair Station
 - Environmental Story
- ### Phase 1-Mezzanine
- Event space as needed



Mezzanine

Phase 2- Level 1

- Large Mission
- Statement Wall
- Worn Wear Repair Station
- Floor and wall product fixtures

Phase 2-Mezzanine

- Environmental Story and seating move to the mezzanine
- Floor and wall
- Product fixtures



Mezzanine

Patagonia Store Scala, Floor Plans, Phase 1



Level 1



Mezzanine level

Patagonia Store Scala, Renders, Phase 1







Patagonia Store Scala, Floor Plans, Phase 2



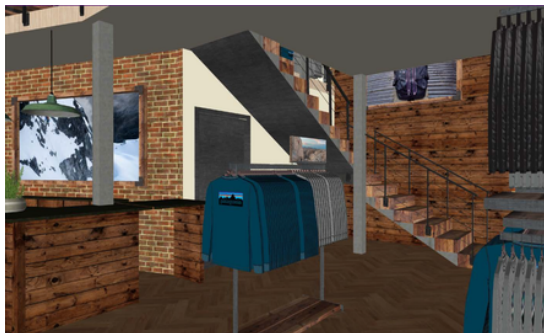
Level 1

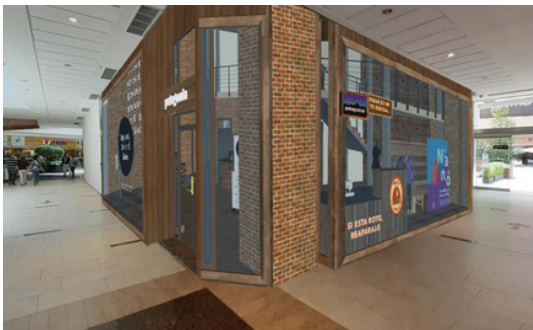
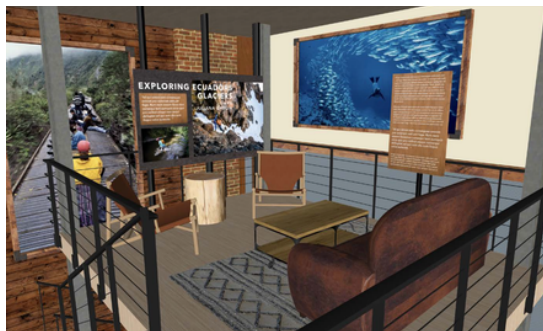


Mezzanine level

Patagonia Store Scala, Renders, Phase 2







Patagonia Store Scala, Finished Project

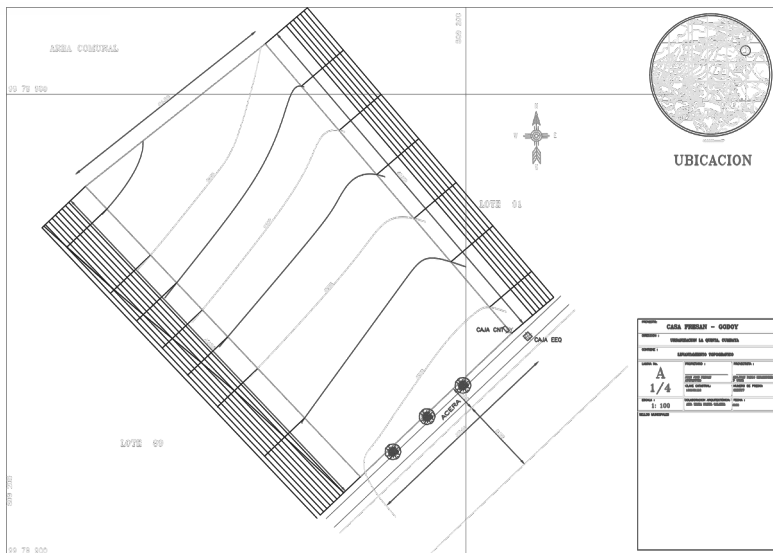




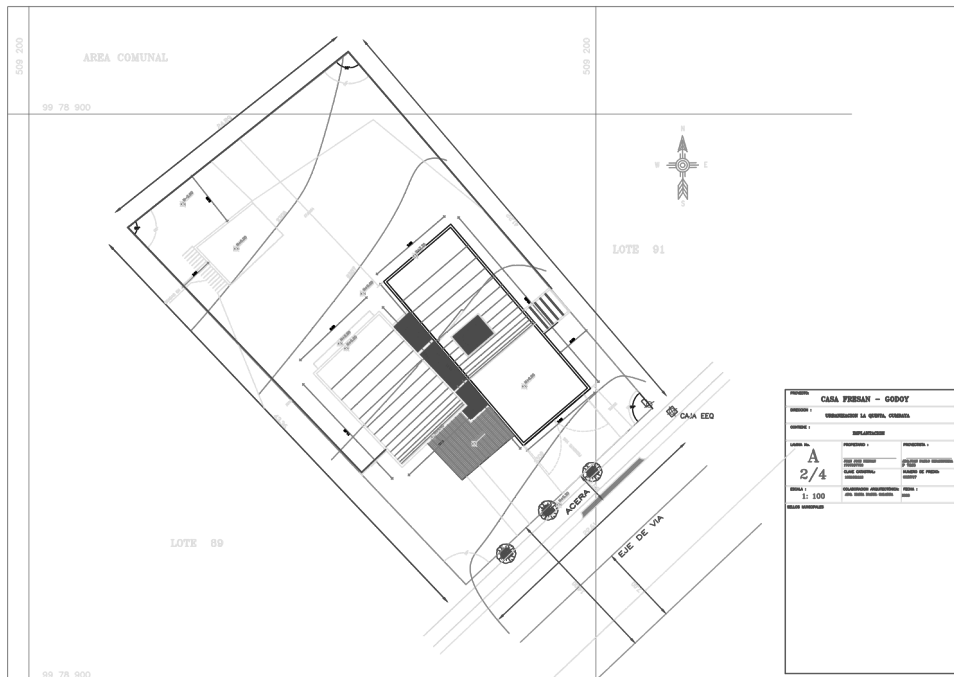


House Fresan/Godoy Architectural Floor Plans

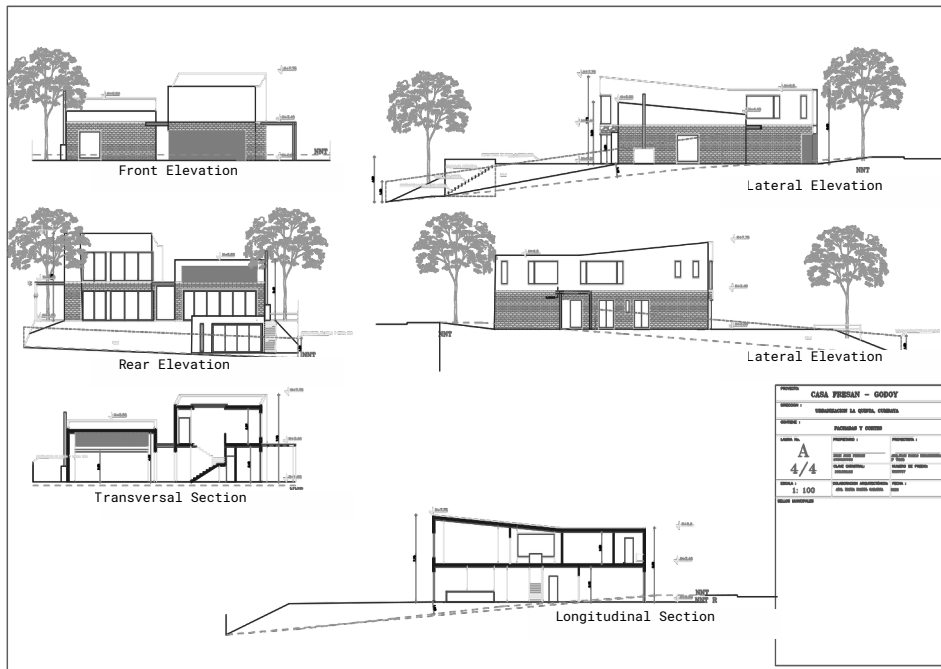
This house is located in Ecuador, in the parish of Cumbaya in the Gated Community of La Loma Pillagua. It features a modern design with exposed brickwork, white plaster surfaces, and wooden accents, creating a warm, timeless aesthetic. Large glass windows connect indoor and outdoor spaces, while the interior blends brick, concrete, and wood with minimalist furnishings and handcrafted lighting. The open floor plan emphasizes natural light, social spaces, and harmony with the surrounding landscape.



Topographic Floor Plan



Roofs Floor Plan



House Fresan/Godoy Hydraulic Floor Plan

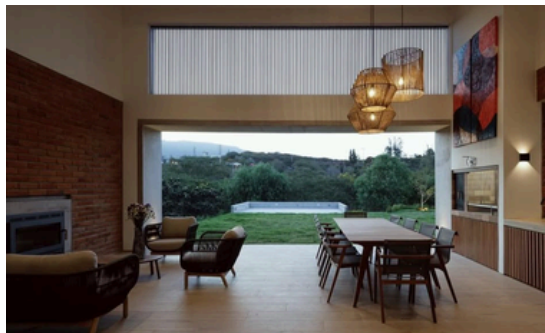


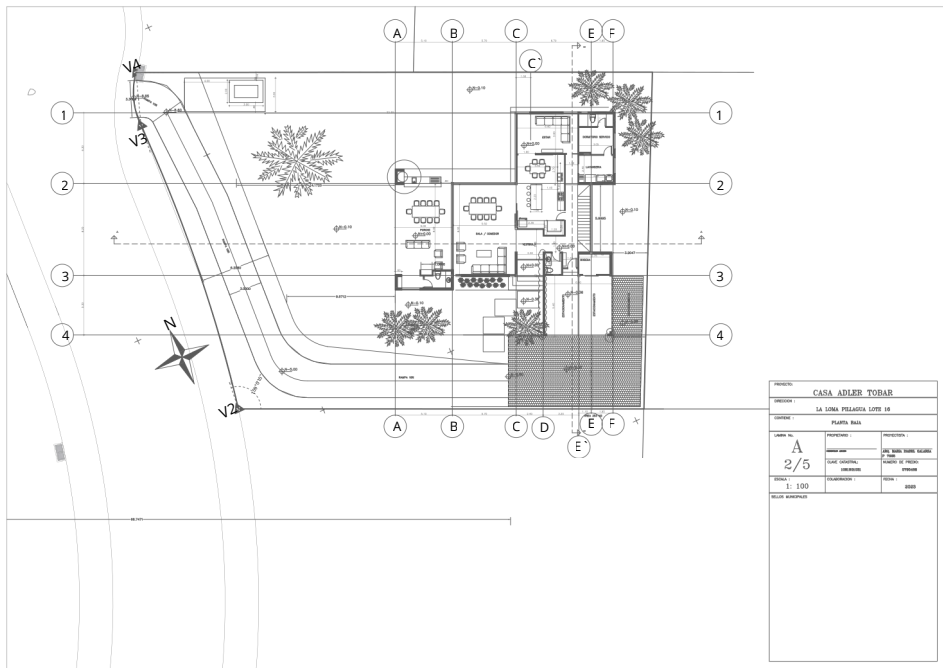
House Fresan/Godoy Sanitary Floor Plan



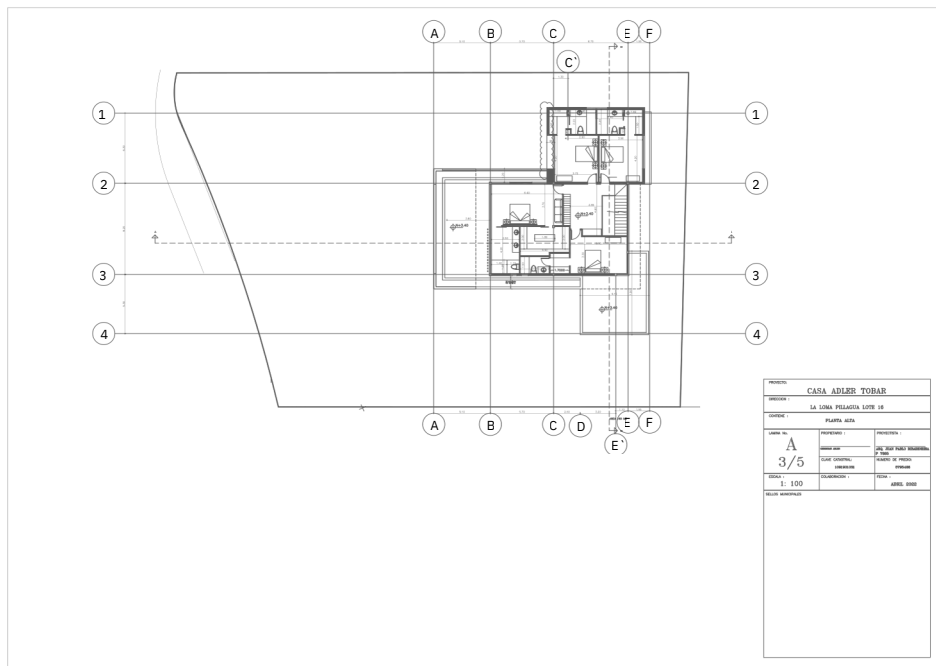
House Fresan/Godoy Finished Project





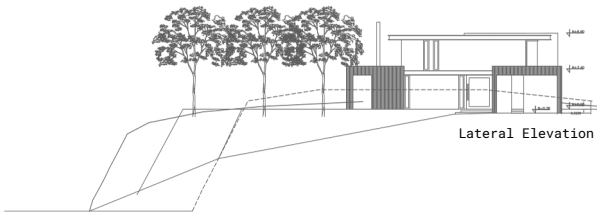
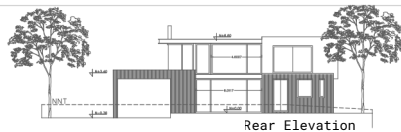
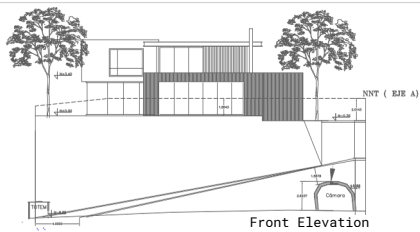


Ground Floor Plan

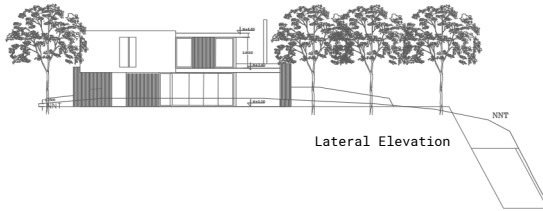


First Floor Plan

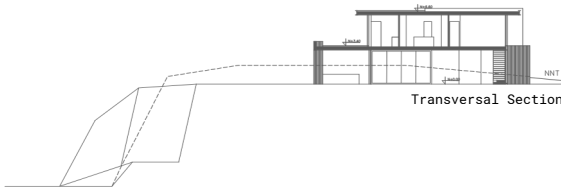
PROYECTO: CASA ADLER TOBAR			
UBICACION: LA LOMA PILLAGUA LOTE 16			
CONTEXTO: PLANTA AJEA			
LÁMINA No. A	PROYECTADO POR:	PROYECTADO EN:	
3/5	CARDI ARIZ	DEL 2011 HASTA 2012	
ESCALA: 1:100	ELABORADO POR:	PLANO DE PISO:	
FECHA: ABRIL 2008	ANDREA	PRIMERA	
NOTAS ADICIONALES:			



PROYECTO			
CASA ADLER TOBAR			
UBICACION			
LA LOMA PELAGIAL LOTE 10			
CONTENIDO			
FACEDOR			
LABELA No.	PROYECTOS	PROYECTOS	
A	CONSTRUCCION	CONSTRUCCION	
4/5	PLAN GENERAL	PLAN GENERAL	
	CONSTRUCCION	CONSTRUCCION	
ESCALA	FECHA	FECHA	FECHA
1: 100			
OTROS DATOS			



Lateral Elevation



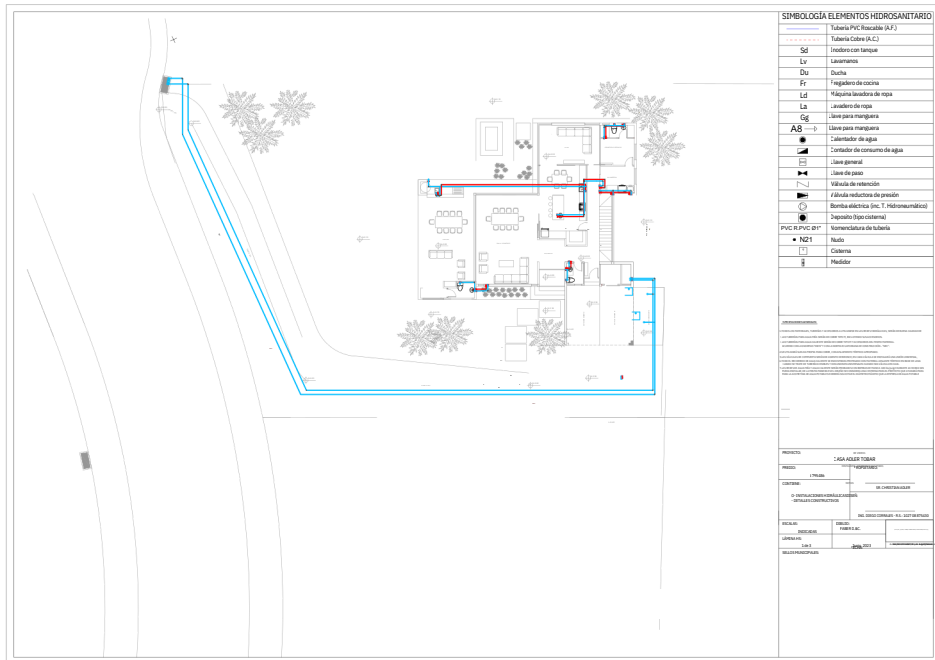
Transversal Section



Longitudinal Section

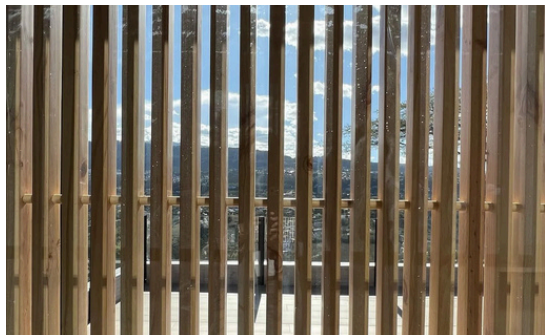
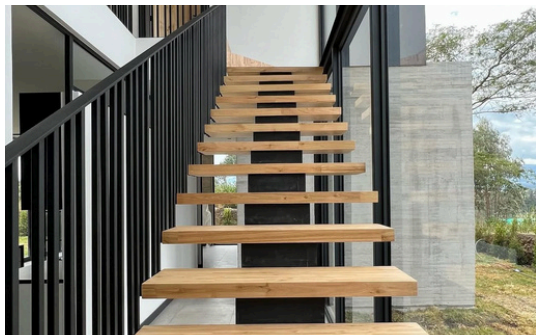
PROYECTO			
CASA ADLER TOBAR			
DIRECCION			
LA LOMA PILLAGUA LOTE 18			
CONTENIDO			
FACUSDA Y COSTOS			
LAMINA No.	PROYECTOS	PROYECTOS I	
A 5/5	PROYECTO	PROYECTO I	
	CASE ORIGINAL	CASE ORIGINAL	
	MODIFICACION	MODIFICACION	
ESCALA	FECHA	FECHA	
1: 100		AÑO 2018	
DISEÑOS RESPONSABLES			

House Atler/Tobar Hydraulic Floor Plan



House Atler/Tobar Finished Project





Patagonia Store Quicentro, Section Floor Plans

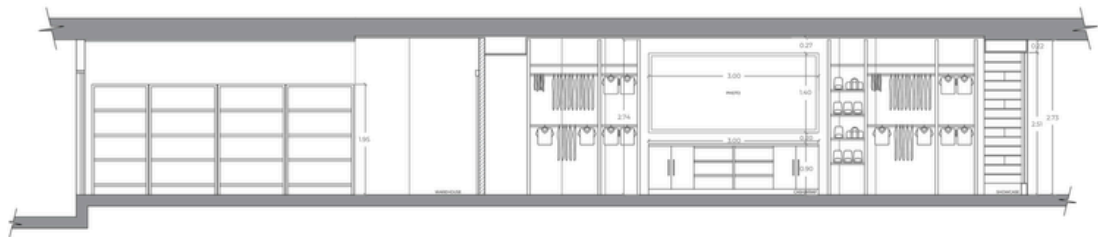


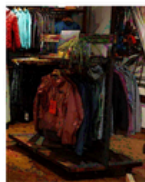
foto de referencia



Patagonia Store Quicentro, Section Floor Plans



ARM CHAIR

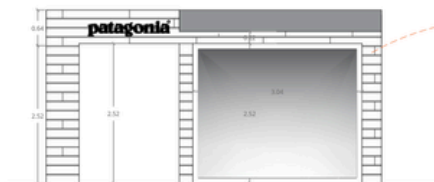


GONDOLA

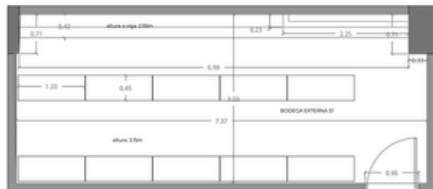


Patagonia Store Quicentro, Elevation, Storage and Cashwrap Floor Plans

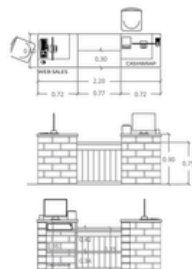
foto de referencia



Elevation Front Store

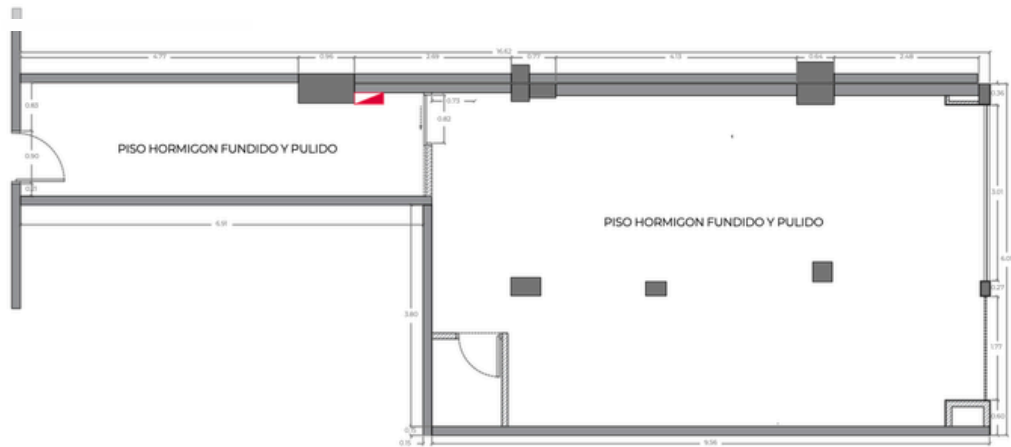


Exterior Storage



Cashwrap Design/Plans

Patagonia Store Quicentro, Ceiling Detail and Flooring Detail Floor Plan



Flooring Detail

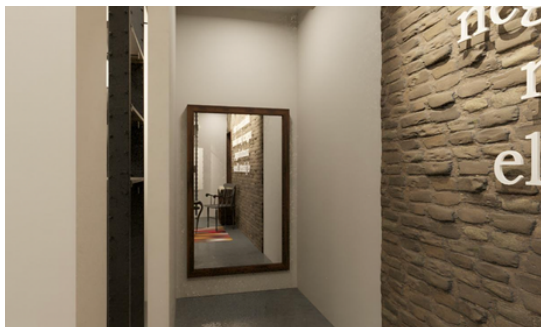
Patagonia Store Quicentro, Renders



Patagonia Store Quicentro, Renders



Patagonia Store Quicentro, Renders



Patagonia Store Quicentro, Finished Project



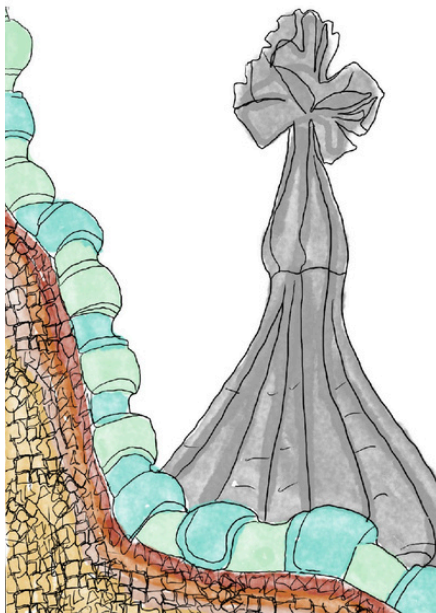




Batllo House, Rooftop

Scale A4

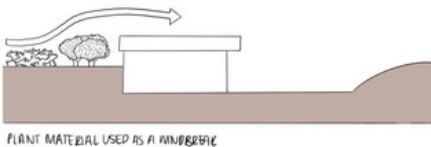
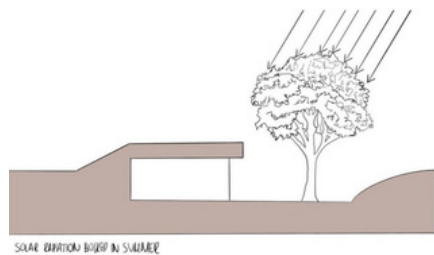
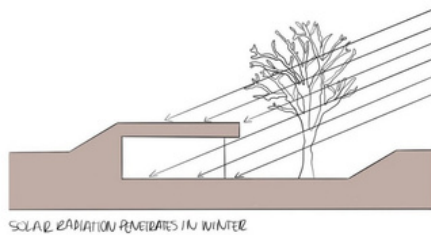
Pens and watercolors



Houses with Earthen Berms

Scale A4

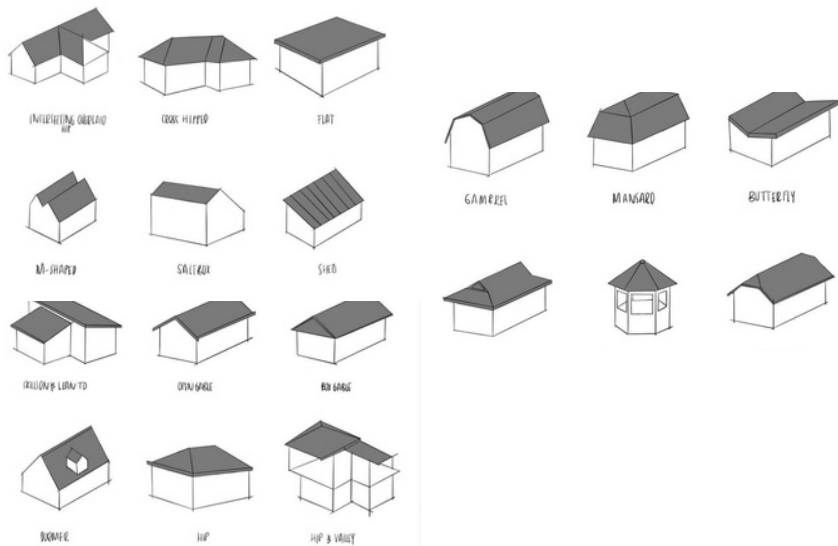
Markers of various thicknesses and pens



Types of Roofs

Scale A4

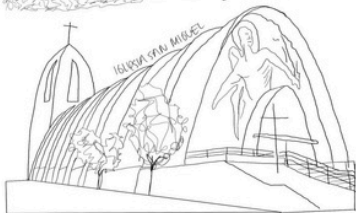
Markers of various thicknesses and pens



Hyperbolic Paraboloids in Ecuador

Scale A4

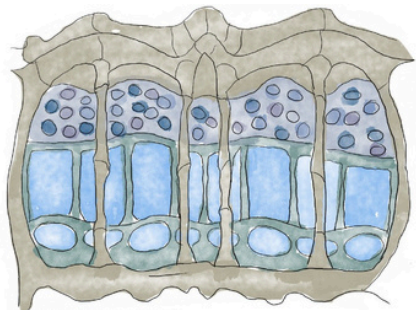
Various thicknesses of pens



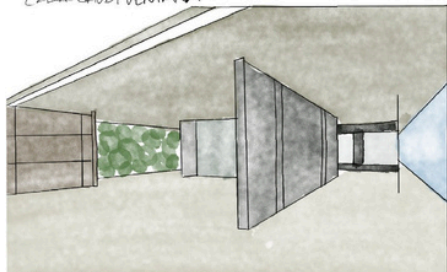
Barcelona Buildings

Scale A4

Pens of various thicknesses and watercolors



CASA GAUDÍ VENTANA



PABELLÓN MIES VAN DER ROTHE

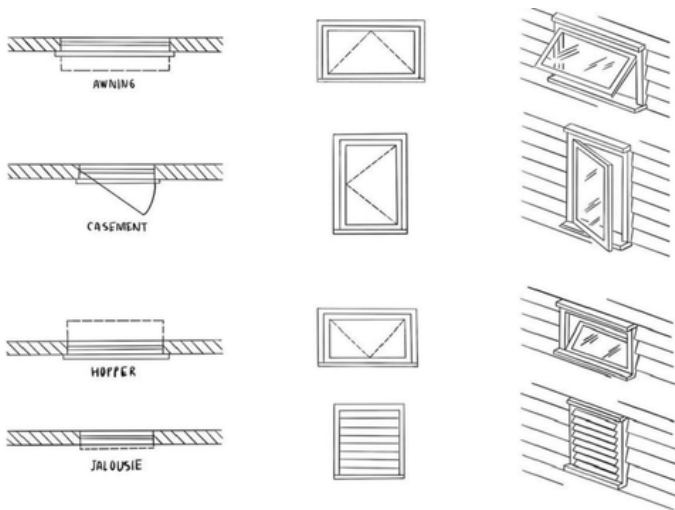


LA PEDRERA

Types of Windows

Scale A4

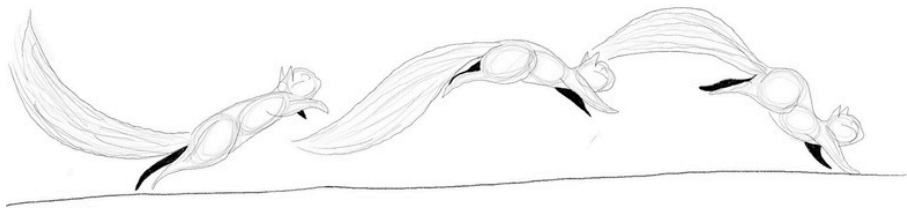
Markers of various thicknesses and pens



Squirrel In Motion

Scale A5

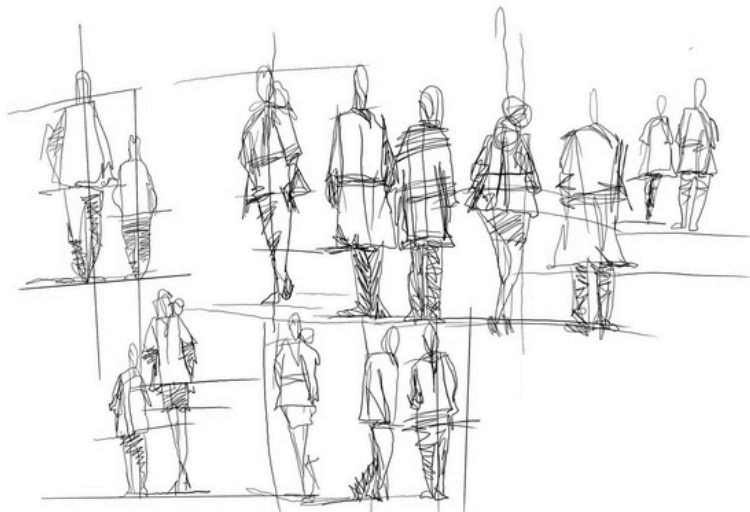
Pencils of various thicknesses and marker



Humans

Scale A5

Pencils h, hb, b and their derivatives



Who am I

Scale A2

Mixed Media



Trees Perspective

Scale A3

Pencils h, hb, b and their derivatives



2 Tea Cups

Scale A5

Monochromatic acrylic paint



Building of Quito

Scale A4

Markers of various thicknesses and pens



Room with Shadows

Scale A4

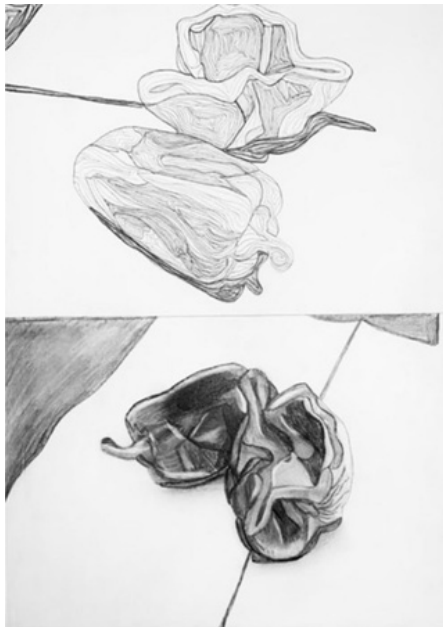
Pencils h, hb, b and their derivatives



Bell peppers

Scale A3

Pencils h, hb, b and their derivatives



Greece

Scale A5

Lithography



China Town Street

Scale A4

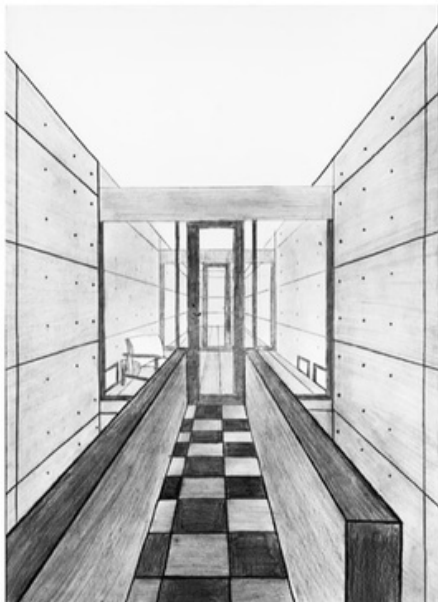
Markers of various thicknesses and pens



Azuma House Interior Perspective

Scale A4

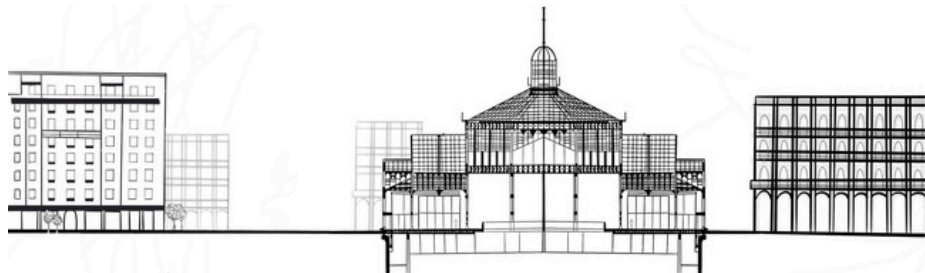
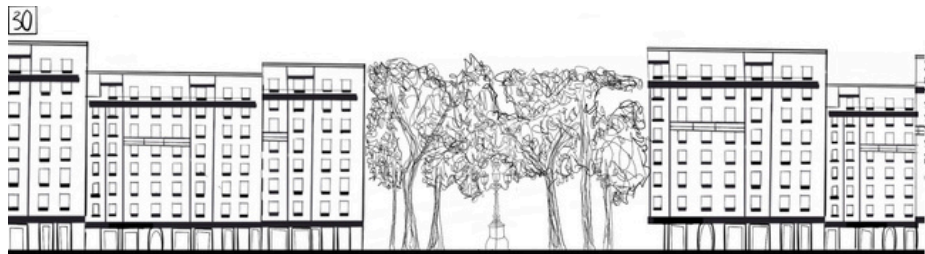
Pencils h, hb, b and their derivatives



Section of Borne Market and Passeig del Borne

Scale 1:50

Markers of various thicknesses and pens



Facade elevation of a Building in Cumbayá Park detail, Quito

Scale A4

Markers of various thicknesses and pens



Gu Doksan Library

Scale A3

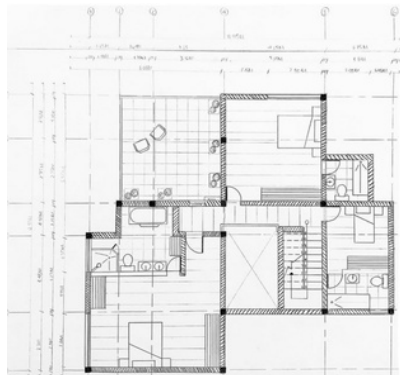
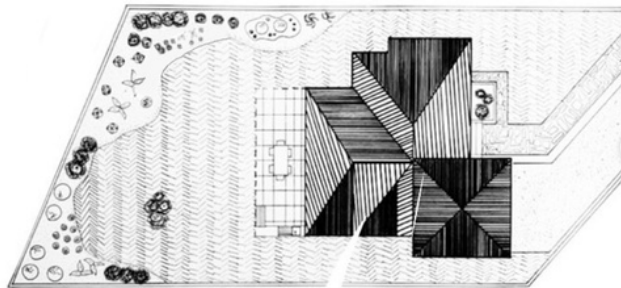
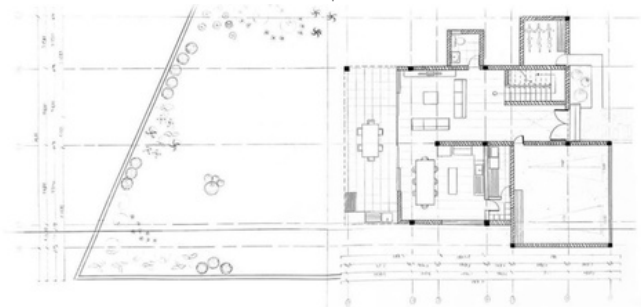
Markers of various thicknesses and pens



Floor Plan House, 2 Floors

Scale A3

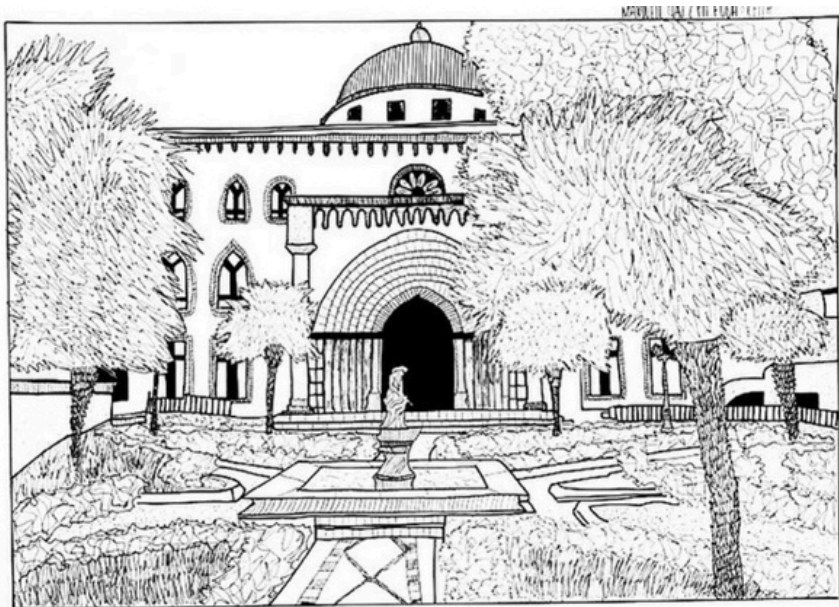
Markers of various thicknesses and pens



Maxwell Building at USFQ, Quito

Scale A3

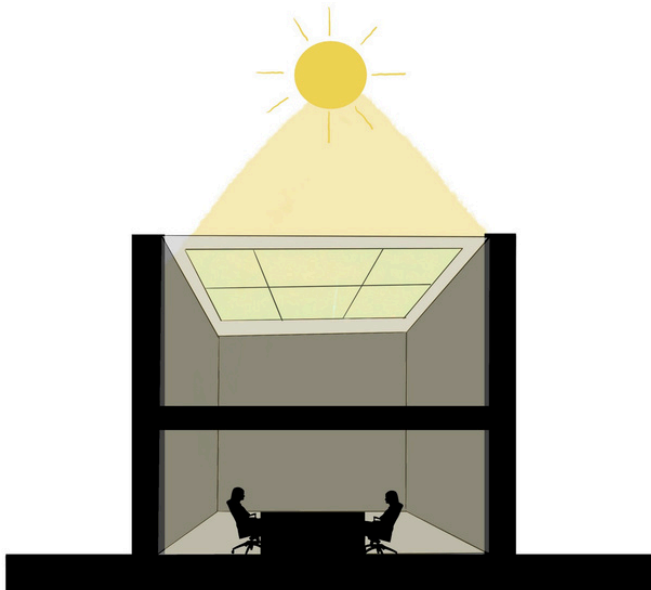
Markers of various thicknesses and pens



Direct Sunlight Over Building

Scale A4

Markers of various thicknesses and pens



Section Cut Buildings at Plaza Santa María, Barcelona

Scale 1:50

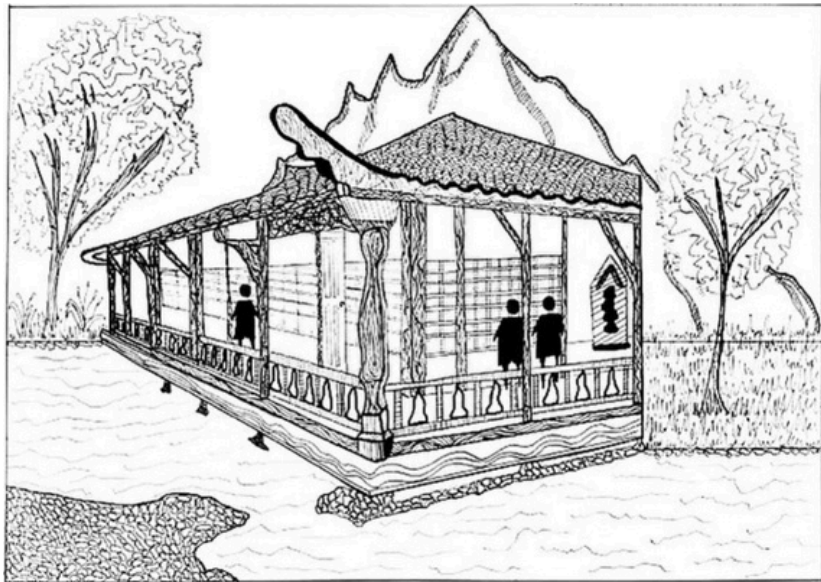
Markers of various thicknesses and pens



Pagoda Building at USFQ, Quito

Scale A3

Markers of various thicknesses and pens



Perspective of Building, Barcelona

Scale A3

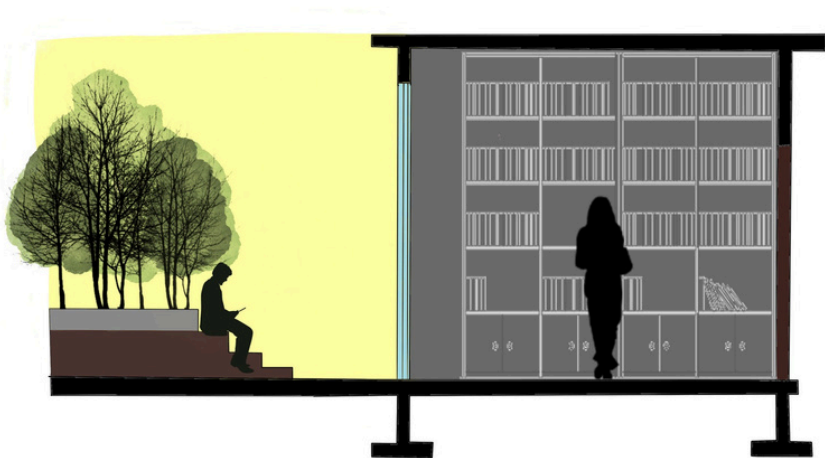
Markers of various thicknesses and pens



Library Section

Scale A4

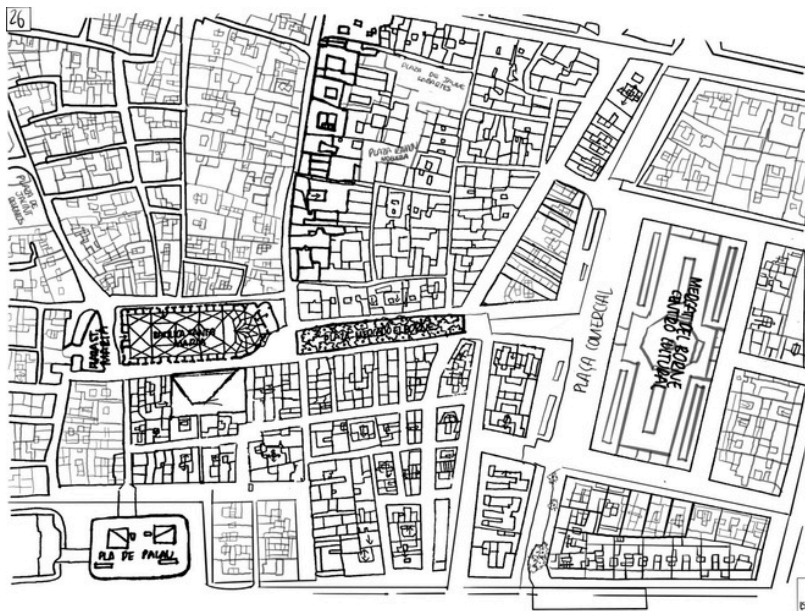
Markers of various thicknesses and pens



Urban Fabric of Borne, Barcelona

Scale 1:3000

Markers of various thicknesses and pens



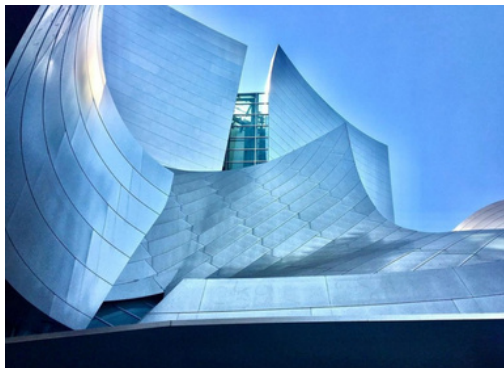
Walt Disney Concert Hall

Architect Frank Gehry

Built 1999-2003

Los Angeles, California, USA

Walt Disney Concert Hall is recognized for the world's most acoustically sophisticated concert halls and is an international architectural landmark. Since the day of its inauguration, metal surfaces have been associated with the designer and architect Frank Gehry. The concert hall was designed as a single volume, with orchestra and audience occupying the same space. Seating is located on either side of the stage, providing some audience members with distant views of the performers' score. For Disney Hall, Frank envisioned projecting fragments of the action onto musicians onstage wielding their instruments, each image appearing on a different panel of the building's angular surface, like a kind of abstract portrait set to a classic.



Chanel Guillotine (Breakfast Nook)

Artist Tom Sachs

Built 1998

Guggenheim, Bilbao Spain

Serves as a sharp critique of how high-end luxury brands dominate our culture and identity. By combining the elegant Chanel aesthetic with a crude, functional instrument of death, Tom Sachs highlights the "execution" of individuality in favor of consumer status. The subtitle, Breakfast Nook, adds a chilling layer of domesticity, suggesting that this obsession with labels isn't just a distant corporate phenomenon, but something we've invited directly into our homes and daily lives. This commentary finds a positive resolution in vintage shopping, where collectors can reclaim these iconic logos as sustainable treasures, stripping away the "lethal" nature of fast-fashion consumption in favor of celebrating timeless craftsmanship and history.



Basilica Di San Pietro

Main architects Donato Bramante, Michelangelo, Carlo Maderno, Raphael

Built 1506-1626

Rome, Vatican City, Italy

The Basilica Di San Pietro is considered one of the most sacred temples of the Catholic Church and an important pilgrimage site. It is one of the largest churches in the world. This church began its construction when the old basilica was demolished. When you enter the basilica the first thing you notice is the size, that means that it was designed so as not to understand how big it is because everything is proportional inside. The dome was inspired by the Pantheon. The dome is so large that the Statue of Liberty could fit inside it. The Baldacchino was designed by Lorenzo and its purpose was to mark the tomb of Saint Peter. The Basilica houses the tombs of 91 popes, including Pope John Paul II, who was recently buried in 2005.



Palace of Versailles

Principal architects Louis Le Vau, Jules Hardouin, André Le Nostre, Ange-Jacques, Robert de Cotte

Built 1624-1698

Place d'Armes, Versailles, France

The Palace of Versailles was the former French royal residence and the center of government is now a national monument. It is an example of French Baroque architecture and is the most famous royal Chateau in Paris, France. During his reign, Louis XIV converted this chateau into one of the largest palaces in the world. The grand scale of Versailles demonstrates the architecture's theme of creation and division that is marked by repetition. Inside we can see mini-Renaissance and decorative art. The garden palace was made to meet the ceremonial and festive requirements of the king. The park constitutes the natural and ideal setting for endless festivities based on close relationships. The palace had 700 rooms inside it, each room is different. An emblematic place of the palace is the Hall of Mirrors in which there are 375 mirrors. This room is where the Treaty of Versailles and the Proclamation of the German Empire were signed.



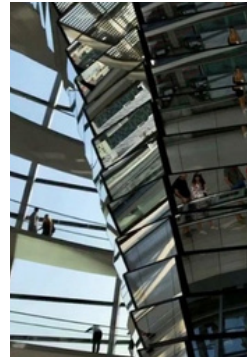
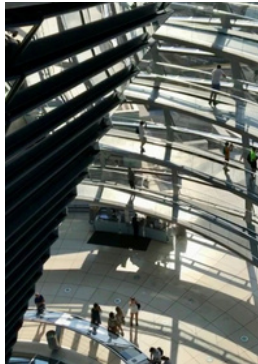
Dome of the Reichstag Building

Designed by Norman Foster Built by Wagner-Biro

Built 1992-1999

Platz der Republik, Berlin, Germany

It is one of the main symbols of Berlin and is capable of communicating, in a single glance, that communion between past and present that turns the German capital today into an architectural laboratory and a true and adequate open-air exhibition of the dome. Reichstag is the result of the ingenuity of Norman Foster, winner in 1993, the international convened with the aim of rebuilding the structure demolished in 1954. The dome of the Reichstag is a large glass dome with a 360-degree view. The debating chamber of the Bundestag, the German parliament, can be seen below. A reflected cone in the center of the dome directs sunlight toward the building, so visitors can see the camera's operation. The dome is open to the public and can be reached by climbing two spiral steel ramps reminiscent of a double helix. The Dome symbolizes that the people are above the government, as was not the case during Nazism.



Evening Dress (Robe du soir)

Designed by Christian Dior

Dress from 1954

Meam Museum, Lisbon, Portugal

This 1954 Christian Dior gown is a masterclass in mid-century architectural couture. Crafted from rich emerald green silk taffeta, it exemplifies the transition from the iconic "New Look" to the more streamlined silhouettes of the mid-50s. The design centers on a precision-engineered, strapless bodice that creates a dramatic contrast with the voluminous, structured skirt, showcasing Dior's signature ability to treat fabric like a sculptural medium.



House Vicens

Architect Antonio Gaudí
Built 1506-1888
Barcelona, Barcelona, Spain

Casa Vicens, designed by renowned architect Antoni Gaudí, stands as a pioneering work in the context of Catalan Modernisme, which is Spain's version of the Art Nouveau movement. Constructed between 1883 and 1888 in Barcelona, this residential masterpiece showcases Gaudí's distinctive architectural style characterized by a harmonious integration of natural forms and ornamentation. The house exhibits a vibrant color palette, intricate ceramic tiles, and neo-Mudejar elements that highlight Gaudí's fascination with geometry and nature. Casa Vicens is renowned for its avant-garde design, marked by an asymmetrical façade, whimsical towers, and an eclectic blend of architectural influences. The innovative use of materials, including brick, iron, and ceramics, reflects Gaudí's commitment to experimentation and a departure from conventional building techniques of the time. With its unique combination of architectural fantasy, structural innovation, and meticulous attention to detail, Casa Vicens stands as a testament to Gaudí's visionary approach and remains an iconic representation of Catalan Modernisme.



Basilica of the National Vote

Architect Emilio Tarlier

Constructed 1874-1988

Centro Histórico, Quito, Ecuador

It is also called the Consecration of Jesus or the Basilica of Saint John. It is the most important work of Ecuadorian neo-Gothic architecture and one of the most representative of the American continent, being at the same time the most important of the lands of the New World. Due to its structure and style, it is compared to two of the great cathedrals in the world: St. Patrick's Basilica, located in New York, and Notre Dame Cathedral, in Paris. The Basilica was blessed by Pope John Paul II on January 30, 1985, and was consecrated and officially inaugurated on July 12, 1988. The Basilica has two entrances and six access doors. Inside this majestic construction is the National Pantheon of Ecuadorian Heads of State, where some former presidents are buried.



THANK YOU